

Carolina country





20 CAROLINA COUNTRY ADVENTURES AHEAD



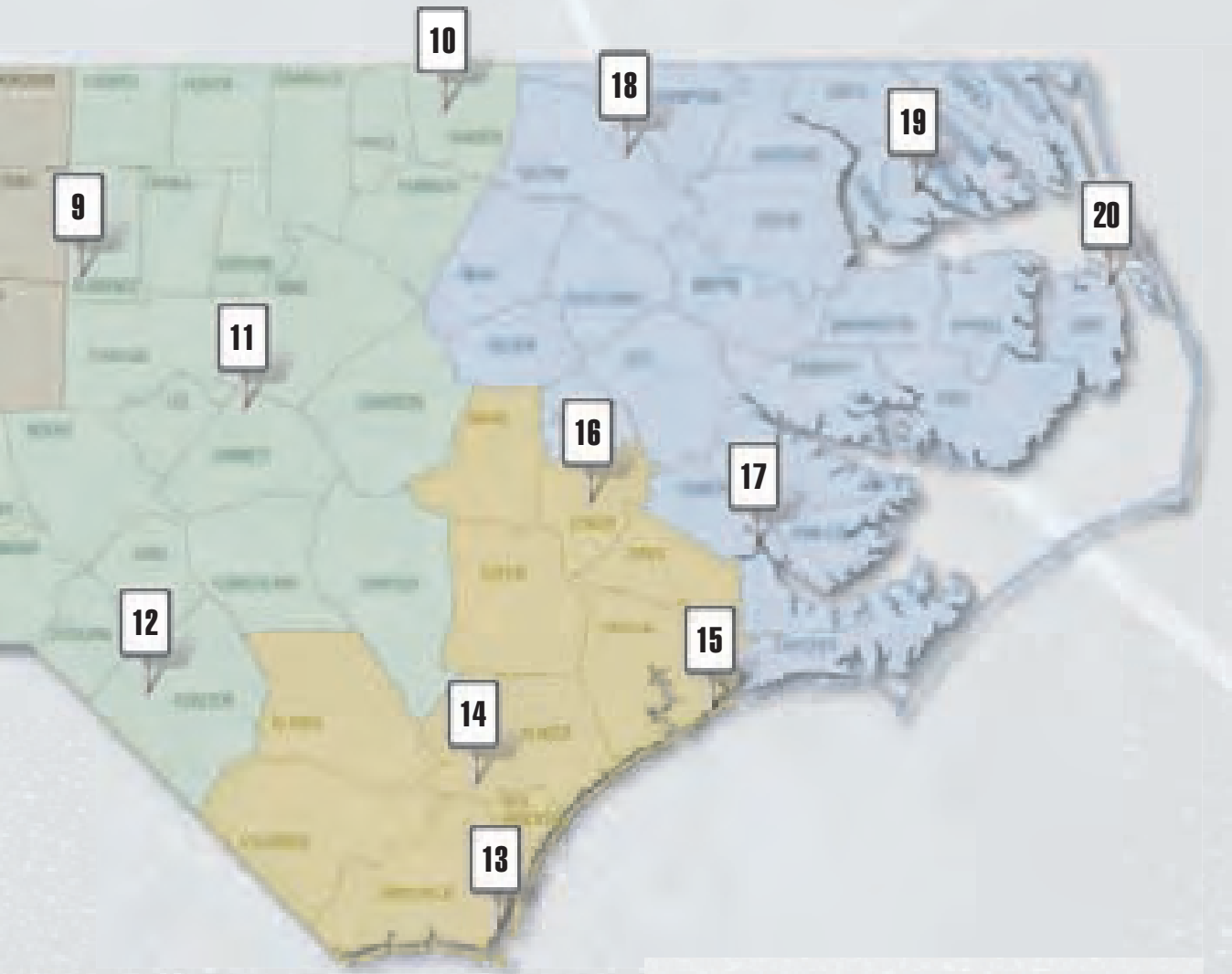
From one end to the other, North Carolina is about as diverse as any state in the nation. We've got hard gemstones in the west, soft crabs on the coast and red clay in the middle. The tobacco we grow in the mountains is different than what we grow in the east. What we live in, how we drive, what we eat and how we talk varies from one region to another.

Our annual Touchstone Energy Travel Guide encourages you to experience this variety firsthand.

This year we've collected the primary sources of general information about each of five regions (pages 79–82) and accompany them with a set of Carolina Country Adventures. Among the four adventures for each region are some well-known standbys and some not so familiar, some historical, some recreational, some just plain fun.

As you make your way through this guide, or through the countryside responsible for these adventures, you can be assured that a Touchstone Energy cooperative is nearby.

Thanks to everyone who helped us compile this guide, and to our sponsors: the cooperatives and the advertisers on pages 48 to 53.



Travel Advertising	48
■ Mountains.	54
■ Western Piedmont	59
■ Eastern Piedmont	64
■ Southern Coastland	69
■ Northern Coastland.	74
Travel Resources	79

This supplement to Carolina Country is brought to you by North Carolina's Touchstone Energy cooperatives, serving nearly 2 million people in 93 North Carolina counties. We bring the power of human connections to all regions of North Carolina. Touchstone Energy cooperatives nationwide are committed to integrity, accountability, innovation and community involvement.


Writers
 Carla Burgess
 Margarita Galvan
 Renee C. Gannon
 Michael E.C. Gery
 Karen Olson House
 Kim Whorton Tripp
 Tara Verna

Designers
 Warren Kessler
 Tara Verna
 Linda Van de Zande

Advertising
 Jennifer Boedart Hoey
 Jenny Lloyd

MOUNTAIN ADVENTURES



 Towering peaks, lush valleys and postcard views are just around the bend in this culturally rich region. Old-time music, heritage arts and crafts, quaint inns, Appalachian cooking and pristine hiking trails are among its attractions. (For more information see our travel resources on page 79.)

1

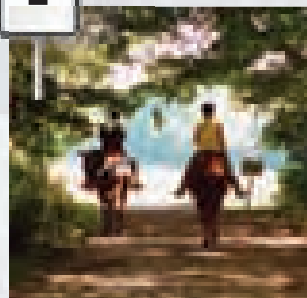
WHEELS THROUGH TIME



Discover nearly 300 vintage American-made motorcycles housed within this 40,000-square-foot museum in Maggie Valley. These are not dusty relics—they run.

2

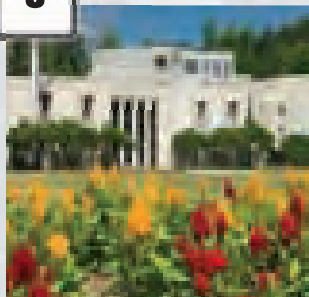
CONE & PRICE PARKS



The fun at two big Parkway parks includes horseback riding, fishing and exploring a textile king's estate.

3

GARDEN OF THE SENSES



Experience a medley of gardens in Wilkesboro, including one specially designed for the visually impaired.

4

HIDDENITE CENTER



Find hidden treasure in an arts center that recreates a flashy gem trader's home and displays vintage dolls.

1 WHEELS THROUGH TIME MUSEUM

Haywood County

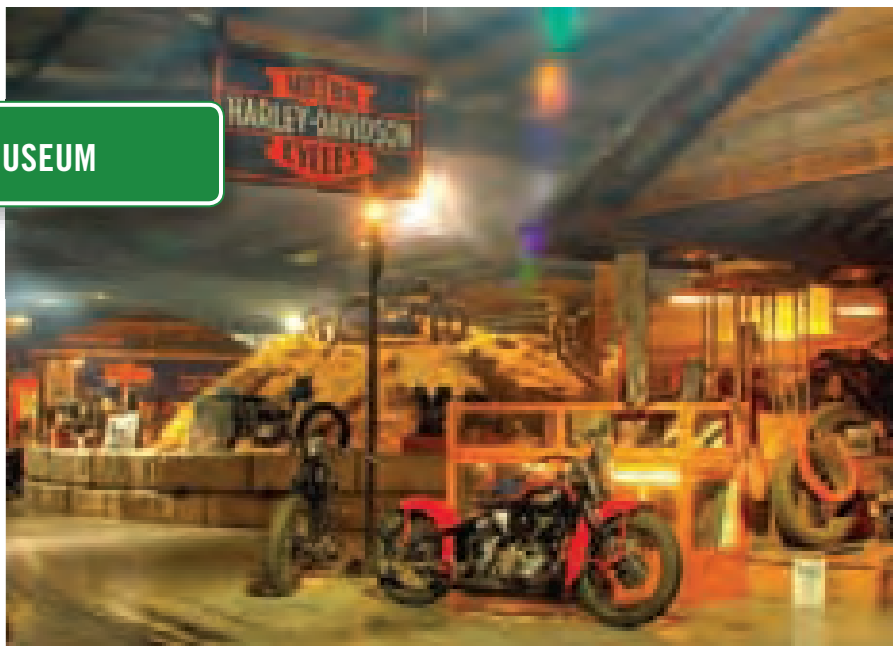
By Tara Verna

What's all American as apple pie, ear-splitting loud at close quarters, and might cause your grandmother to have a conniption if you got one? Motorcycles, of course. And you can find nearly 300 vintage American-made bikes housed within the 40,000-square-foot Wheels Through Time Museum in Maggie Valley—just don't tell grandma.

Fueled by a passion for these machines, curator Dale Walksler started the museum 16 years ago, going on to custom build a structure to house his precious collection of bikes and automobiles in Maggie Valley in 2002. His collection mostly pre-dates 1950, but does include some more modern examples. Motorcycles from 24 different brands and nine decades are represented—a historic, living collection of the culture and sport that has influenced our society for more than 100 years.

THE MUSEUM THAT RUNS

The displays are mostly grouped by time period, beginning with 1900–1928 when motorcycles emerged from a motor-powered bicycle to a more reliable form of sport and transportation. More than 30 pre-1916 models—in working order no less—grace the museum, lending credence to the museum's motto, "The Museum That Runs." Military bikes, racing bikes, hill climbing bikes, choppers, pre-war motorcycles and special prototypes—they're all here, along with more than 25,000 pieces of art and memorabilia.



The Wheels Through Time Museum features custom-built displays, including a hill climbing exhibit, seen in the background.

You'll find Steve McQueen's 1917 military motorcycle, and Evel Knievel's 1970 H-D jump bike, not to mention "Big, The World's Largest Motorcycle Chopper." Nearly 23 feet long and standing more than eight-and-a-half feet tall, it rides five people with ease. Powered by a 1,500-cc American V-Twin Motor, it was handcrafted by some of the top motorcycle builders in the country.

EXHIBITS ROAR TO LIFE

On a daily basis, Walksler fires up his bikes—these are not simply relics collecting dust. Nearly 99 percent of these rare, antique motorcycles run, thanks to Walksler himself, plus a few volunteers who keep these well-oiled machines humming along in a 1920s-era shop. The fact that these antique bikes can roar to life has even attracted movie producers—some most recently from the romantic comedy "Leatherheads," slated for release this month. The producers visited the museum to capture the roaring sound of an authentic 1920s-era motorcycle portrayed in the film—a sound not so easy to find.

The motorcycles come from all over—from just down the street, to as far away as New Zealand. Museum visitors hail from all over as well—in 2006 alone, the museum hosted guests from all 50 states and 42 countries.

Unfortunately, 2008 marks the last year that you'll be able to visit the Wheels Through Time Museum in its present location. The museum is relocating out of North Carolina so if you pay them a visit, be sure and arrive before its doors close on August 31, 2008.

The enthusiasm and passion of Dale Walksler and his all-volunteer staff is infectious. If you go, consider bringing grandma, too. 📍

Wheels Through Time Museum

62 Vintage Lane
Maggie Valley, NC 28751

(828) 926-6266

www.wheelsthroughtime.com



The museum's Harley 45 Exhibit showcases these Harley-Davidson motorcycles with small displacement, lightweight v-twin engines. The machine was appropriately named after its 45-cubic-inch displacement.

2 MOSES CONE & JULIAN PRICE PARKS

Watauga County

By Karen Olson House

The Moses Cone estate is the legacy of early textile entrepreneur Moses H. Cone, known as the “Denim King,” who bought 3,600 acres near Blowing Rock and built a premier country estate.

It was donated to the U.S. government in the late 1940s, and today visitors can enjoy its beautiful forests and meadows and see first-rate crafts. Flat Top Manor, once Cone’s summer home, houses a National Park Service information desk and the Parkway’s only official craft center, where artisans such as glass blowers and weavers demonstrate their skills.

Entering the manor, visitors see a grand staircase with a curving banister made from a single piece of cherry wood, then an arresting mix of contemporary and traditional mountain crafts for sale. The manor no longer has Cone furnishings, but rangers lead 30-minute weekend history tours (reservations only) on its second floor.

A few yards from the manor lies Craftsman’s Trail, a 20-minute loop that passes between white oaks and under red maple, black cherry and tulip poplar trees.

Moses Cone was a naturalist before the term became popular. He replaced any tree that was cut and planted extensive white pine forests. Perhaps the most appreciated aspect of his estate is the more than 25 miles of carriage roads for walking and horseback riding. Gently sloping roads reveal

Bass Lake, remains of apple orchards and the Cone cemetery. Visitors can bring horses or take rides through stables in Blowing Rock.

Estate admission is free. Trails are open year-round. The craft center’s dates of operation are typically from mid-March through October or November.

Moses H. Cone Memorial & Visitor Center

667 Service Road
Blowing Rock, NC 28605

(828) 295-3782
www.nps.gov/blri

Parkway Craft Center

(828) 295-7938



The Cone estate offers crafts and carriage trails. Julian Price Park has campsites on well-stocked Price Lake.

JULIAN PRICE MEMORIAL PARK

Located just three miles away from the Moses Cone estate, this park boasts picturesque picnicking and the largest campground on the Parkway. Roughly 3,900 acres offer numerous recreational opportunities, including hiking, canoeing and fishing.

Like the Cone estate, this land was also donated. Insurance executive Julian Price bought it in the late 1930s and 1940s to create a retreat for Jefferson Standard Life Insurance Company employees. Price’s death in 1946 postponed plans, and Jefferson Standard eventually gave the property to the National Park Service.

Campsites are located right at or near Price Lake. (If you like lakeside, ask about sites in the A-loop.) The park has seven trails including the Price Lake Loop Trail (2.7 miles) that circles the well-stocked lake and the Tanawha Trail (13.5 miles), which wraps around part of Grandfather Mountain.

Canoe and rowboat rental is available from Memorial Day to Labor Day, and on weekends in early May, late September and October. No motorboats allowed. The campground is open year-round. Fee required for campsites. ⓘ

Sandy Flats Ranger Station

5580 Shulls Mill Road
Blowing Rock, NC 28605

(828) 295-7591

Campground reservations

(877) 444-6777
www.RECREATION.gov

3 MERLE WATSON GARDEN OF THE SENSES

Wilkes County

By Karen Olson House



This unique memorial garden features English and Braille plaques, scented plants and artistic works designed for touch.

A garden's visual beauty doesn't have much to offer to someone who is blind or has trouble seeing. Garden for the Senses, located at Wilkes Community College in Wilkesboro, is designed so visitors, regardless of their visual ability, can enjoy it.

This novel gem is dedicated to the late Eddy Merle Watson. Merle (the name he went by) was the only son of legendary blind acoustic musician "Doc" Watson. A highly talented musician in his own right, Merle died in a tractor accident in 1985.

The memorial garden's entryway beckons with a brick arbor covered in vines and knobby pavers that subtly massage your feet. A relaxing stroll reveals an artful wood gazebo, smooth, curved brick benches and plants selected for their strong fragrances and unusual textures.

English and Braille plaques identify aromatic plants such as sweet box and witch hazel. Special pole and path lighting and floodlights aid visually impaired people in distinguishing between the light and dark objects in the garden.

A striking feature is "Nature's Alphabet," a serpentine brick wall of about 150 feet with raised, sculptured images representing letters. Starting with armadillo for "A," images are in alphabetical order so visually-impaired visitors can guess what image is next. Is that a butterfly? A crab? Visitors feel and see rounded peas a little larger than a man's hand, and at the end, a zebra. The sculptures have several different colors in shades of light and dark clay for visual emphasis.

Nearby, the intricate "Tree of Memories" panel, 8 feet tall and 15 feet wide, has two shades of yellow for the leaves and white and brown clays for the textured bark.

A large brick plaque bearing images of bluegrass instruments shows a bearded Merle and Doc making old-time music. Reportedly one of the first persons to run his hands over the plaque was Doc himself.

MORE GARDENS NEARBY

Visitors can amble through other alluring botanical gardens on the campus. Like the Garden of the Senses, their features were enhanced by philanthropic donations and the work of horticulture instructors and students. Areas to make time for include an elegant Japanese garden with an arched wooden bridge and stone pagoda, a rose garden with tiered fountain, and a site with various evergreens.

A one-mile trail winds through a native garden and affords views of heritage cabins and the Doc and Merle Watson amphitheatre, where Merlefest, a popular annual music festival, is staged late April.

A multi-age playground and picnic tables are nearby. All gardens are open daily and admission is free. 📍

Wilkes Community College

1328 S. Collegiate Drive
Wilkesboro, NC 28697

(336) 838-6100

www.MerleFest.org/Gardens.htm



The serene Japanese garden has meandering pathways, pretty rocks and other classic elements such as this pagoda.

4 HIDDENITE CENTER

Alexander County

By Karen Olson House

Hiddenite Center, a folklife and cultural arts institution, is an eclectic treasure that houses local art and crafts, rare gems and a glimpse into a wealthy eccentric's life.

Listed on the National Registry of Historic Places, the Center is an imposing Victorian house. Originally built as a two-story dwelling, it was imaginatively enlarged around 1918 when it was cut in half horizontally, the second story raised up to become the third story, and a new story sandwiched in between. The dazzling architectural feat helped secure its place on the Registry.

LUCAS MANSION

The first floor has been recreated in the manner when a flashy gem trader lived there in the 1920s. James Paul Lucas (nicknamed Diamond Jim) used the house as a vacation home. He liked to entertain and to hunt, and the house's furnishings sport an intriguing mix of stuffed animal heads, dark, masculine furniture and flamboyant, ornate walking sticks.

Lucas installed the most modern conveniences of his day, including an intricate bell system in the dining room used to summon servants, and hoses on every floor to extinguish fires. The kitchen has a hand-churning washing machine, and a 1915 GE refrigerator. Visitors can also tour the parlor, music room, a bedroom and foyer.



"Diamond Jim," owner of the Lucas Mansion, was a flashy dresser who liked to hunt.



Hiddenite Center offers a floor tour of a flamboyant man's turn of the century home, gem mining exhibits, a doll collection, and an art gallery.

RARE GEMS AND ART GALLERY

The rest of the first floor pays tribute to the town of Hiddenite's (literally) rich mining history, and displays newspaper articles, vintage photos of digs, and valuable minerals and gemstones such as sapphires, emeralds and garnets.

The second floor is home to monthly exhibits that feature works from local painters, weavers, quilters and other artisans.

The Center's mission to educate and enrich the public extends to informative talks, concerts, dinners and art classes held either at the Center or its Educational Complex, a few blocks away.

HELLO, DOLLIES

The third floor displays an impressive collection of about 550 dolls on loan from Hiddenite Center's founder, Eileen Sharpe. They include creatures made of straw and wood, porcelain figures from the 1870s and kitschy dolls including Marilyn Monroe.

HOURS AND ADMISSIONS

Hiddenite Center is open Monday through Friday from 9 a.m. to 4:30 p.m. Admission to the first floor (Lucas area) is \$2.50 for adults, \$1.50 for students and seniors. All other gallery areas are free. There is a gift shop. 📍

Hiddenite Center, Inc.

316 Church Street
Hiddenite, NC 28636

(828) 632-6966

www.hiddenitecenter.com

N.C. TRAVEL RESOURCES

MOUNTAINS

Alexander County

(828) 632-8141

www.alexandercountychamber.com

Alleghany County Chamber

(800) 372-5473

www.sparta-nc.com

Andrews Chamber

(828) 321-3584

www.andrewschambercommerce.com

Ashe County Chamber

(888) 343-2743

www.ashechamber.com

Asheville CVB

(828) 258-6101

www.exploreasheville.com

Avery/Banner Elk

(800) 972-2183

www.balconyoftheblueridge.com

Beech Mountain Chamber

(800) 468-5506

www.beechmtn.com

Black Mountain

(800) 669-2301

www.exploreblackmountain.com

Blowing Rock

(877) 750-INFO

www.blowingrock.com

Blue Ridge Parkway

(828) 298-0398

www.blueridgeparkway.org

Boone CVB

(800) 852-9506

www.visitboonenc.com

Brevard/Transylvania County Tourism

(800) 648-4523

www.visitwaterfalls.com

Brevard-Transylvania Chamber

(828) 883-3700

www.brevardncchamber.org

Burke County Travel & Tourism, Morganton

(888) 462-2921

www.burkecountytourism.org

Caldwell County

(828) 757-1290

<http://caldwell.ces.ncsu.edu>

Caldwell County Chamber

(828) 726-0616

www.caldwellcochamber.org

Cashiers Area

(828) 743-5191

www.cashiersnorthcarolina.com

Catawba County

(828) 465-8240

<http://catawba.ces.ncsu.edu>

Cherokee County

(828) 837-2242

www.cherokeecountychamber.com

Cherokee Indian Reservation

(800) 438-1601

www.cherokee-nc.com/main.htm

Clay County Chamber

(828) 389-3704

www.claycounty-nc-chamber.com

Cleveland County Chamber

(704) 484-4800/(704) 487-8521

(704) 739-4755 (Kings Mountain)

www.clevelandchamber.org

Dillsboro Merchants Assn

(828) 586-3461

www.dillsboromERCHANTS.com

Franklin Chamber/Macon County

(800) 336-7829/(828) 524-3161

www.franklin-chamber.com

Graham County Travel & Tourism

(800) 470-3790/(828) 479-3790

www.grahamcountytravel.com

Haywood County Chamber

(828) 456-3021/(877) 456-3073

www.haywood-nc.com

Haywood County/Maggie Valley/Waynesville

Gateway to the Smokies

(800) 334-9036/(828) 452-0152

www.smokeymountains.net

Henderson County

Travel & Tourism

(800) 828-4244

www.historichendersonville.org

www.historicflatrock.org

Greater Hendersonville Chamber

(828) 692-1413

www.hendersonvillechamber.org

Hickory Metro CVB & Regional Visitors Center

(800) 509-2444/(828) 322-1335

www.hickorymetro.com

Hickory Nut Gorge

(877) 625-2715/(828) 625-2725

www.hickorynut.org

High Country Host

Travel & accommodations

information

(800) 438-7500/(828) 264-1299

www.mountainsofnc.com

Highlands Chamber & Visitors Center

(828) 526-2114

www.highlandschamber.org

Jackson County Travel & Tourism

(800) 962-1911

www.mountainlovers.com

Lincolnton-Lincoln County

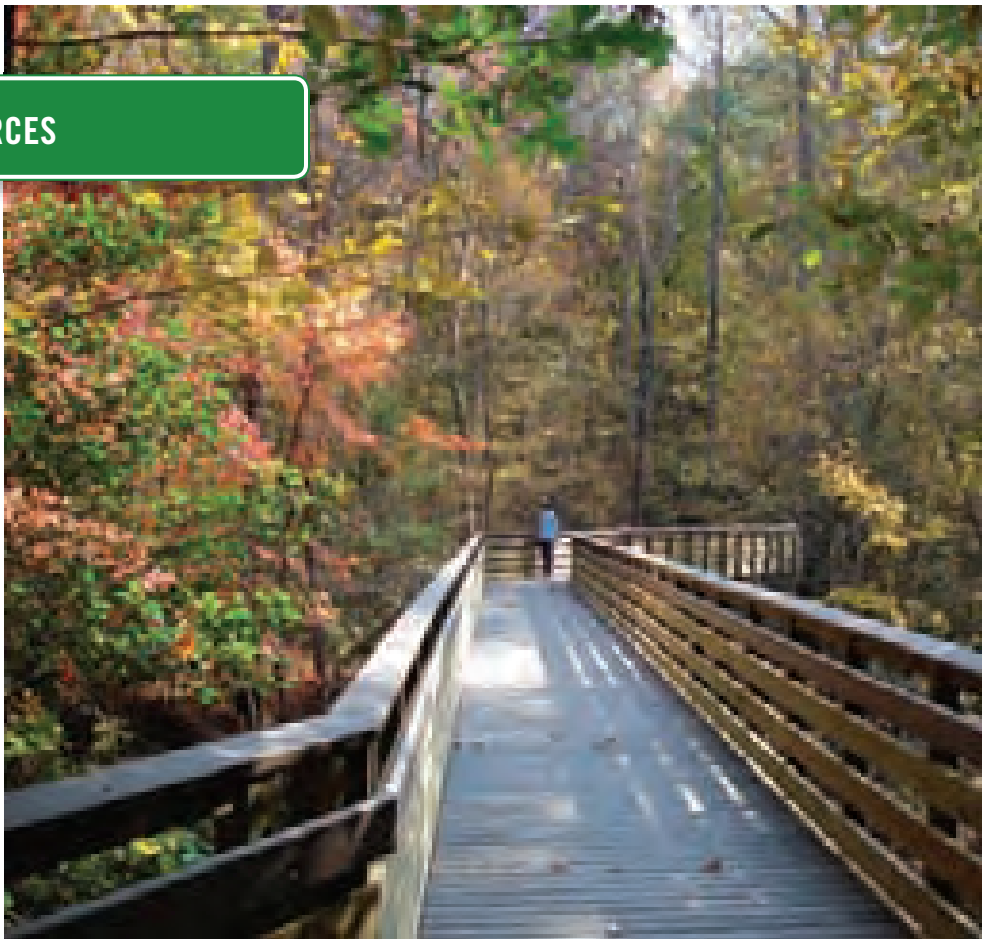
(704) 735-3096

www.lincolinchambernc.org

Madison County

(877) 262-3476

www.visitmadisoncounty.com



Maggie Valley Area CVB
(800) 624-4431/(828) 926-1686
www.maggiervalley.org

McDowell Chamber
(828) 652-4240
www.mcdowellchamber.com

McDowell Tourism Development Authority, Old Fort
(888) 233-6111/(828) 668-4282
www.mcdowellnc.org

Mitchell County Chamber, Spruce Pine
(828) 765-9483/(800) 227-3912
www.mitchell-county.com

Mooresville CVB
(704) 799-2400/(877) 661-1234
www.racecityusa.org
www.mooresvillenc.org

NC Welcome Center
(I-40 West, Waynesville)
(828) 627-6206
www.visitnc.com

North Wilkesboro
(336) 667-7129
www.north-wilkesboro.com

Old Fort Chamber
(828) 668-7223
www.oldfort.org

Polk County Chamber
(828) 859-6236
www.polkchamber.org

Polk County Visitors Center, Tryon
(800) 440-7848
www.nc-mountains.org

Rutherford County Chamber
(828) 287-3090
www.rutherfordcoc.org

Rutherford County Tourism Development
(800) 849-5998/(828) 245-1492
www.rutherfordtourism.com

Statesville CVB
(877) 531-1819/(704) 878-3480
www.visitstatesville.org

Smoky Mountain Host
Guide to attractions & accommodations
(800) 432-4678
www.visitsmokies.org

Swain County
(800) 867-9246/(828) 488-3681
www.greatsmokies.com

Wilkes County Chamber
(336) 838-8662
www.wilkesnc.org

Wilkesboro
(336) 838-3951
www.wilkesboronorthcarolina.com

Yancey County-Burnsville Chamber
(800) 948-1632/(828) 682-7413
www.yanceychamber.com

WESTERN PIEDMONT

Anson County Chamber, Wadesboro
(704) 694-4181
www.ansoncounty.org

Archdale-Trinity Chamber
(336) 434-2073
www.archdaletrinitychamber.com

Belmont Chamber
(704) 825-5307

Bessemer City Area
(704) 629-5542
www.bessemercity.com

Cabarrus County CVB
(800) 848-3740/(704) 782-4340
www.visitcabarrusc.com

Central Park
(910) 428-9001
www.centralparknc.org
info@centralparknc.org

Charlotte Chamber
(704) 378-1300
www.charlottechamber.org

Charlotte CVB
(800) 722-1994/(704) 334-2282
www.visitcharlotte.com

Cherryville Chamber
(704) 435-3451
www.cherryvillechamber.com
www.cityofcherryville.com

Davidson County
www.visitdavidsoncounty.com

Davie County Chamber
(336) 751-3304
www.daviecounty.com

Denton Area Chamber
(336) 859-5922
www.dentonnorthcarolina.com

Eden
(336) 623-2110
www.ci.eden.nc.us

Elkin-Jonesville Chamber
(336) 526-1111
www.welcometonc.com

Gaston County Chamber
(800) 348-8461/(704) 864-2621
www.gastonchamber.com

Gaston County Travel & Tourism
(800) 849-9994/(704) 825-4044
www.gastontourism.com

Greensboro Area Chamber
(336) 387-8301
www.greensboro.org

Greensboro Area Convention & Visitors Bureau
(800) 344-2282/(336) 274-2282
www.visitgreensboro.com

High Point Chamber
(336) 882-5000
www.highpointchamber.org

High Point Convention & Visitors Bureau
(800) 720-5255/(336) 884-5255
www.highpoint.org

Kernersville Chamber
(336) 993-4521
www.kernersvillenc.com

King Chamber
(336) 983-9308
www.kingnc.com

Lexington Area Chamber & Visitors Center
(866) 604-2389/(336) 236-4218
www.visitlexingtonnc.com

Liberty Chamber
(845) 791-4200
www.liberty-nc.com

Marshville
(704) 624-3183
www.marshvillenc.com

Matthews Chamber
(704) 847-3649
www.matthewschamber.com

Mint Hill
(704) 545-9726
www.minthill.com

Monroe Tourism & Visitors Bureau
(704) 225-1085
www.visitmonroenc.org

Greater Mount Airy
(800) 948-0949/(336) 786-6116
www.visitmayberry.com

Piedmont Triad Visitors Center
(800) 388-9830/(336) 388-9830
www.greensboronc.org

Randolph County Tourism, Asheboro
(800) 626-2672
www.visitrandolphcounty.com

Reidsville Chamber
(336) 349-8481
www.reidsvillechamber.org

Rowan County Chamber
(704) 633-4221
www.rowanchamber.com

Rowan County CVB
(800) 332-2343/(704) 638-3100
www.visitsalisburync.com

Stanly County Chamber
(704) 982-8116
www.stanlychamber.org

Stanly County CVB
(800) 650-1476/(704) 986-2583
www.stanlycvb.com

Stokes County
(336) 593-2496
www.visitstokesnc.com

Thomasville Visitors Center
(800) 611-9907
www.thomasvilletourism.com

Union County Chamber
(704) 289-4567
www.unioncountycoc.com

Western Rockingham Chamber
(336) 548-6248
www.westernrockinghamchamber.com

Winston-Salem Visitor Center
(866) 728-4200/(336) 728-4200
www.visitwinstonsalem.com

Yadkin County Chamber
(336) 679-2200
www.yadkinchamber.org

EASTERN PIEDMONT

Angier
(919) 639-2500
www.angierchamber.org

Apex Chamber
(919) 362-6456/(800) 345-4504
www.apexchamber.com

Benson Chamber
(919) 894-3825
www.benson-chamber.com
www.bensonmuledays.com

Burlington/Alamance CVB
(800) 637-3804/(336) 570-1444
www.burlington-area-nc.org

Capital Area Visitor Center
(919) 733-4994
www.ncstatecapitol.org

Cary Chamber
(919) 467-1016/(800) 919-CARY
www.townofcary.org
www.carychamber.com

Caswell County Chamber
(336) 694-6106
www.caswellchamber.com

Chapel Hill/Orange County Visitors Bureau
(888) 968-2060
www.chocvb.org

Chapel Hill-Carrboro Chamber
(919) 967-7075
www.carolinachamber.org

Clayton Chamber
(919) 553-6352
www.claytonchamber.com

Dunn Area Tourism Authority
(910) 892-3282
www.dunn tourism.org
www.visitDunn.com

Durham CVB
(800) 446-8604/(919) 687-0288
www.durham-nc.com

Greater Durham Chamber
(919) 682-2133
www.durhamchamber.org

Erwin Area
(910) 897-7300
www.erwinchamber.org

Fayetteville Area CVB
(800) 255-8217/(910) 483-5311
www.visitfayettevillenc.com

Franklin County
(919) 496-3056
www.franklin-chamber.org

Fuquay-Varina Area
(919) 552-4947
www.fuquay-varina.com

Garner Chamber
(919) 772-6440
www.garnerchamber.org

Garner
(919) 772-4688
www.ci.garner.nc.us

Granville County Chamber
(919) 693-6125/(919) 528-4994
www.granville-chamber.com

Hillsborough/Orange County
(919) 732-8156
www.hillsboroughchamber.com

Historic Hillsborough
(877) 732-7748/(919) 732-7741
www.historichillsborough.org

Holly Springs Town Hall
(919) 552-6221
www.hollyspringsnc.us

Hope Mills
(910) 423-4314
www.hopemillschamber.com

Johnston County Visitors Bureau
(800) 441-7829/(919) 989-8687
www.johnstoncountync.org

Knightdale Chamber
(919) 266-4603/(919) 217-2220
www.knightdalechamber.org
www.knightdalenc.gov

Laurinburg/Scotland County Area
(910) 276-7420
www.laurinburgchamber.org
www.visitscotlandnc.org

Lillington Area
(910) 893-3751
www.lillingtonnc.com
www.lillingtonchamber.org

Lumberton Visitors Bureau
(800) 359-6971/(910) 739-9999
www.lumberton-nc.com

Montgomery County
(910) 572-4300
www.montgomery-county.com

Morrisville Chamber
(919) 463-7150
www.morrisvillenc.com

Pembroke
(910) 521-9758
www.pembrokenc.com

Person County Tourism
(336) 597-2689
www.visitroxboronc.com

Pinehurst, Southern Pines & Aberdeen Area CVB
(800) 346-5362
www.homeofgolf.com

Pittsboro-Siler CVB
(800) 316-3829
www.visitcathamcounty.com

Raeford-Hoke Chamber
(910) 875-5929
www.hoke-raeford.com

Greater Raleigh Chamber
(919) 664-7000
www.raleighchamber.org

Greater Raleigh CVB
(800) 849-8499/(919) 834-5900
www.visitraleigh.com

Red Springs
(910) 843-5241
www.redsprings.org

Richmond County Chamber, Rockingham
(910) 895-9058
www.richmondcounty chamber.com

Rolesville Town Hall
(919) 556-3506
www.ci.rolesville.nc.us

Roxboro Area Chamber
(336) 599-8333
www.roxboronc.com

Saint Pauls
(910) 865-5164
www.stpaulsnc.gov

Sandhills Area Chamber
(910) 692-3926
www.sandhillsonline.com

Sanford Area Chamber
(919) 775-7341
www.sanford-nc.com

Smithfield-Selma Area Chamber
(919) 934-9166
www.smithfieldselma.com

Greater Spring Lake Chamber
(910) 497-8821
www.springlakenc.org

Vance County Tourism Department, Henderson
(866) 438-4565/(252) 438-2222
www.kerrlake-nc.com

Wake Forest Area
(919) 556-1519
www.wakeforestchamber.org

Warren County EDC
(252) 257-2657
www.warren-chamber.org

Wendell
(919) 365-6318
www.wendellchamber.com

Zebulon
(919) 269-6320
www.zebulonchamber.org

SOUTHERN COAST

Bald Head Island Information Center
(800) 234-2441
www.baldheadisland.com

Beulaville
(910) 298-4647
www.townofbeulaville.com

Brunswick County, Shallotte
(800) 426-6644/(910) 754-6644
www.brunswickcounty chamber.org

Brunswick Islands, Shallotte
(800) 795-7263
www.ncbrunswick.com

Cape Fear Coast CVB
(Wilmington, Carolina Beach, Kure Beach, Wrightsville Beach)
(877) 406-2356
www.gocapefearcoast.com

Columbus County Tourism
(910) 640-2818
www.discovercolumbuscounty.org

Coast Host
Information on attractions & accommodations
www.coasthost-nc.com
(800) 932-2144

Duplin County Tourism
(877) 862-6757
www.duplintourism.org

Elizabethtown-White Lake
(910) 862-4368
www.elizabethtownwhitelake.com
www.bladeninfo.org

Fair Bluff
www.fairbluff.com

Faison
(910) 267-2721

Greater Goldsboro Travel & Tourism
(919) 734-2241/(866) 440-2245
www.greatergoldsboro.com

Greater Hampstead Chamber
(910) 270-9642/(800) 833-2483
www.hampsteadchamber.com

Greater Jacksonville-Onslow
(800) 932-2144/(910) 347-3141
www.jacksonvilleonline.org
www.onslowcountytourism.com

Kenansville Area
(910) 296-2181
www.duplincountync.com

Kenly Chamber
(919) 284-5510
www.kenlynorthcarolina.com

Kinston CVB
(800) 869-0032
www.visitkinston.com

Kinston-Lenoir County Chamber
(252) 527-1131
www.kinstonchamber.com

LaGrange
(252) 527-1131
www.lagrangenorthcarolina.com

Mt. Olive Area Chamber
(919) 658-3113
www.moachamber.com
www.ncpicklefest.org

NC Ferries

(800) BY-FERRY
www.ncferry.org

Onslow County Tourism

(800) 932-2144/(910) 347-3141
www.onslowcountytourism.com

Pender County, Burgaw

(888) 576-4756/(910) 259-1536
www.visitpender.com

Pleasure Island (Carolina Beach, Kure Beach, Fort Fisher)

(800) 631-1460/(910) 341-4030
(800) 641-7082/(877) 406-2356
www.gocapefearcoast.com
www.carolinabeachgetaway.com
www.explorekurebeach.com

Southeastern Welcome Center

(I-95 South, Rowland)
(910) 754-2505

Southport Visitor Center, Southport

(910) 457-7927
www.cityofsouthport.com

Southport-Oak Island

(800) 457-6964/(910) 457-6964
www.southport-oakisland.com

Swansboro Chamber

(910) 326-1174
www.tourswansboro.com

Tabor City Chamber

(910) 653-2031
www.columbuschamber.net

Tabor City Visitor Center

(910) 653-9712
www.taborcitync.org

Greater Topsail Area

(800) 626-2780/(910) 329-4446
www.topsailcoc.com

Wallace

(910) 285-4044
www.wallacechamber.com

Warsaw

(910) 293-7804
www.warsawnorthcarolina.com
www.townofwarsawnc.com

Wayne County Chamber

(919) 734-2241
www.waynecountychamber.com

Greater Whiteville

(888) 533-7196/(910) 642-3171

Wrightsville Beach Visitors Center

(800) 650-9106/(910) 256-8116
www.visitwrightsville.com

NORTHERN COAST**Ahoskie Chamber**

(252) 332-2042
www.ahoskie-nc.org

Aycock Brown

Welcome Center, Kitty Hawk
(877) OBX-4FUN/(252) 261-4644
www.nagsheadguide.com/
attractions/kittyhawk
www.outerbanks.org

Belhaven Community Chamber

(252) 943-3770
www.belhavenchamber.com

Chowan County Tourism, Edenton

(800) 775-0111/(252) 482-3400
www.visitedenton.com

Coast Host

Information on attractions &
accommodation.
www.coasthost-nc.com

Corolla/Currituck Chamber

(252) 453-9497
www.currituckchamber.org

Crystal Coast Tourism Authority

(877) 206-0929/(252) 726-8148
www.crystalcoastnc.org

Dare County

(252) 475-5000
www.darenc.com

Dismal Swamp Canal Welcome Center, Camden County

(877) 771-8333/(252) 771-8333
www.DismalSwamp.com

Duck

(252) 255-1234
www.townofduck.com

Elizabeth City Area CVB

(866) 324-8948/(252) 335-5330
www.discoverec.org

Farmville Chamber

(252) 753-4670
www.farmville-nc.com

Gates County Manager

(252) 357-1240
www.albemarle-nc.com/gates

Greenville/Pitt County CVB

(800) 537-5564
www.visitgreenvillenc.com

Havelock

(252) 447-1101
www.havelockchamber.net

Halifax County Tourism

(800) 522-4282/(252) 535-1687
www.visithalifax.com

Historic Albemarle Tour

(800) 734-1117
www.historicalbemarletour.org

Historic Bath Visitor Center

(252) 923-3971
www.bath.nchistoricsites.org

Hyde County Chamber

(252) 926-9171/(888) 493-3826
www.hydecountychamber.org

Kill Devil Hills

(252) 449-5302
www.kdhnc.com

Kitty Hawk

(252) 261-3552
www.townofkittyhawk.org

Lake Gaston Chamber & Visitors Center

(252) 586-5711/(866) 730-5711
www.lakegastonchamber.com

Manteo

(252) 473-2133
www.townofmanteo.com

Martin County Chamber

(252) 792-4131
www.martincountync.com

Martin County Travel & Tourism

(800) 776-8566/(252) 792-6605
www.visitmartincounty.com

Murfreesboro Historical Association

(252) 398-5922
www.murfreesboronc.com

NC Ferries

(800) BY-FERRY
www.ncferry.org

NC Welcome Center

(I-95 North)
(252) 537-3365
www.visitnc.com

NC Welcome Center

(I-85 North).
(252) 456-3236
www.visitnc.com

Nash County Visitors Bureau

(800) 849-6825/(252) 972-5080
www.RockyMountTravel.com

Nags Head

(252) 441-5508
www.townofnagshead.net

New Bern/Craven County Convention & Visitor Center

(800) 437-5767/(252) 637-9400
www.visitnewbern.com

Ocracoke NPS Visitor Center

(252) 928-4531
www.nps.gov/caha
www.ocracokeisland.com

Outer Banks Chamber

(252) 441-8144
www.outerbankschamber.com

Outer Banks Welcome Center on Roanoke Island

(877) OBX-4FUN/(252) 473-2138
www.outerbanks.org

Pamlico County Chamber

(252) 745-3008
www.pamlicochamber.com
www.pamlicodirectory.com

Perquimans County Chamber

(252) 426-5657
www.perquimans.com

Roanoke Valley Chamber

(252) 537-3513
www.rvchamber.com

Rocky Mount

(252) 972-1542
www.rockymountnc.gov

Rocky Mount Chamber

(252) 446-0323
www.rockymountchamber.org

Scotland Neck

(252) 826-3152
www.townofscotlandneck.com

Southern Shores

(252) 261-2394
www.southernshores-nc.gov

Tarboro-Edgecombe Chamber

(252) 823-7241
www.tarborochamber.com

Greater Tyrrell County Chamber

(252) 796-1996
www.visittyrrellcounty.com

Washington County Tourism

(252) 793-3248
www.visitwashingtoncountync.com

Washington/Beaufort County Visitor Information

(800) 546-0162
www.originalwashington.com

Wilson Visitors Bureau

(800) 497-7398/(252) 243-8440
www.wilson-nc.com

Windsor/Bertie County Chamber

(252) 794-4277
www.albemarle-nc.com/windsor 