

Carolina country





20 CAROLINA COUNTRY ADVENTURES AHEAD



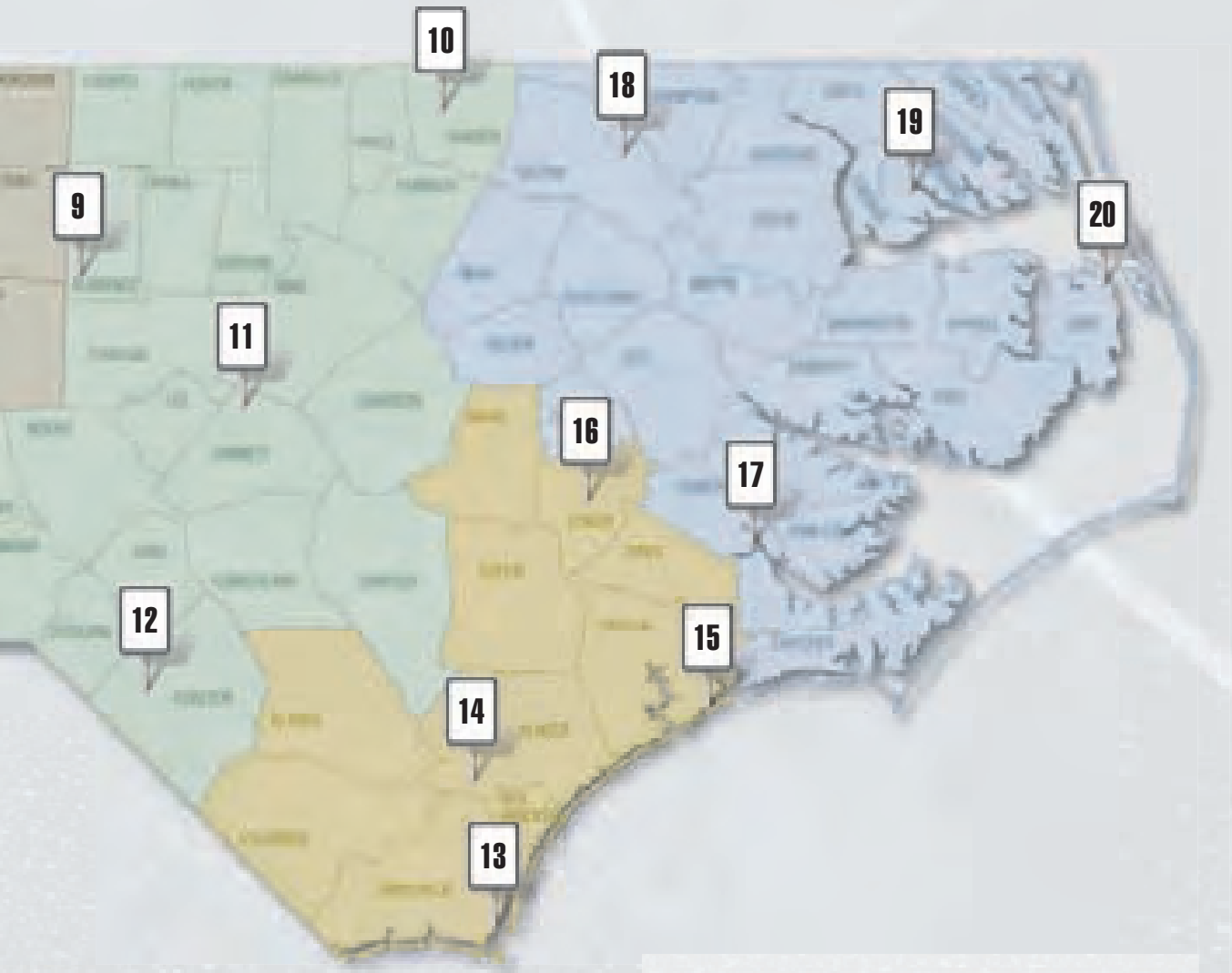
From one end to the other, North Carolina is about as diverse as any state in the nation. We've got hard gemstones in the west, soft crabs on the coast and red clay in the middle. The tobacco we grow in the mountains is different than what we grow in the east. What we live in, how we drive, what we eat and how we talk varies from one region to another.

Our annual Touchstone Energy Travel Guide encourages you to experience this variety firsthand.

This year we've collected the primary sources of general information about each of five regions (pages 79–82) and accompany them with a set of Carolina Country Adventures. Among the four adventures for each region are some well-known standbys and some not so familiar, some historical, some recreational, some just plain fun.

As you make your way through this guide, or through the countryside responsible for these adventures, you can be assured that a Touchstone Energy cooperative is nearby.

Thanks to everyone who helped us compile this guide, and to our sponsors: the cooperatives and the advertisers on pages 48 to 53.



Travel Advertising	48
■ Mountains.	54
■ Western Piedmont	59
■ Eastern Piedmont	64
■ Southern Coastland	69
■ Northern Coastland.	74
Travel Resources	79

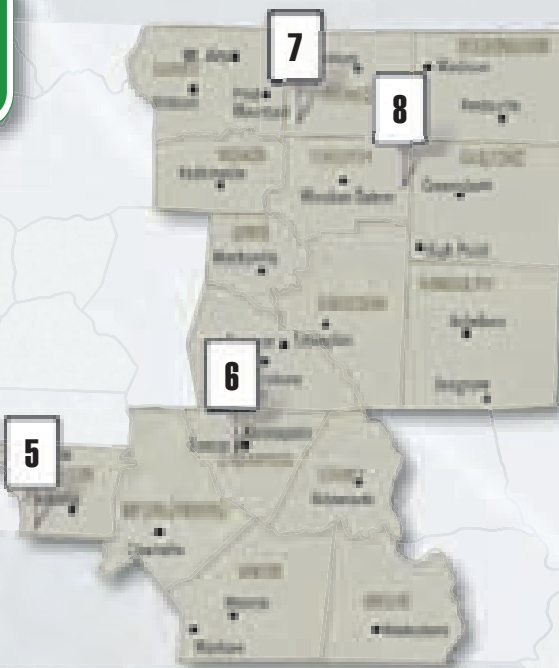
This supplement to Carolina Country is brought to you by North Carolina's Touchstone Energy cooperatives, serving nearly 2 million people in 93 North Carolina counties. We bring the power of human connections to all regions of North Carolina. Touchstone Energy cooperatives nationwide are committed to integrity, accountability, innovation and community involvement.

Writers
 Carla Burgess
 Margarita Galvan
 Renee C. Gannon
 Michael E.C. Gery
 Karen Olson House
 Kim Whorton Tripp
 Tara Verna

Designers
 Warren Kessler
 Tara Verna
 Linda Van de Zande

Advertising
 Jennifer Boedart Hoey
 Jenny Lloyd

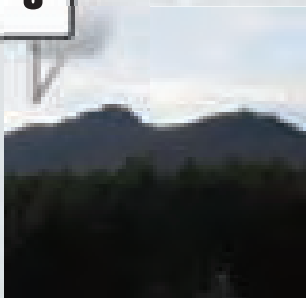
WESTERN PIEDMONT ADVENTURES



Like the gold found and minted here in the 1800s, this region is bright and polished. They say the best barbecue comes from here, too, not to mention furniture, granite, ceramic arts and sonkers. Because of the shine, you can't miss it. (For more information see our travel resources on page 80.)

5

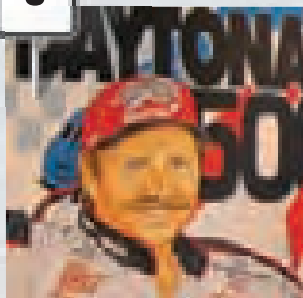
CROWDERS MTN. STATE PARK



The view atop King's Pinnacle and the overlook on Crowders Mountain show the ever-encroaching urban areas of Charlotte and Gastonia in this part of the southwestern Piedmont. The hike to the top will take your breath away.

6

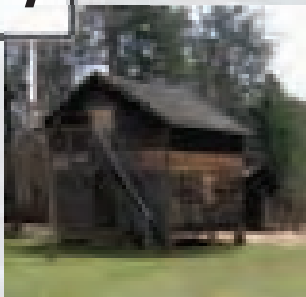
THE DALE TRAIL



Follow the black No. 3 flags along State Hwy. 3 to see the region that molded Dale Earnhardt, both as a person and a legendary NASCAR driver, from his humble beginnings to the DEI empire of glass and granite he built along the way.

7

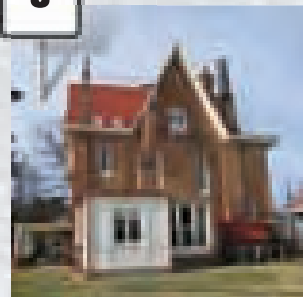
HORNE CREEK HISTORICAL FARM



In the northwestern Piedmont sits an early 1900s-era farm still raising tobacco, fruits, vegetables and livestock the old way. It welcomes visitors to come get their hands dirty and to learn about turn-of-the-20th-century living.

8

KÖRNER'S FOLLY



The three-story architectural maze that sits on Main Street in Kernersville is what one may deem "the ultimate model home" for an interior design business, on all seven levels and in 22 rooms.

5 CROWDERS MOUNTAIN STATE PARK

Gaston County

By Renee C. Gannon

From Raleigh to Charlotte on I-40/I-85, the view is nothing more than concrete walls, concrete road and scattered lines of pine trees as you traverse through the backyards of cities and towns at 70 miles per hour. But south of Charlotte, the foothills of southwestern North Carolina start appearing in the distance.

In Kings Mountain, just off I-85, Crowdres Mountain State Park and its two peaks rise. Crowdres Mountain has an elevation of 1,625 feet, and King's Pinnacle tops out at 1,705 feet. The park's visitor center sits at 875 feet. The two peaks are connected by a saddle that ranges from 900–1,200 feet in elevation.

The visitor center features an exhibit hall that details the history, geology and ecology of the park—what your eyes and ears will see and hear while hiking through the park's wooded acreage. The peaks are what's left of an ancient mountain range that towered thousands of feet high more than 400 million years ago, and are considered part of the Appalachian mountain chain.

SOMETHING FOR EVERYONE

Opened in 1974, the park offers activities for everyone: camping, picnicking, walking/hiking, rock climbing (especially on Crowdres Mountain's sheer vertical cliffs that range from 100–150 feet high) and canoeing on the park's lake.

Ten well-marked, colored foot trails traverse the two peaks, the saddle area and the small lake, with degrees of difficulty from easy to strenuous. Benches are available on all the trails for a quick rest. The easy trails (Fern and Lake) are near picnic areas, with Fern leading to the moderate Turnback Trail and to the strenuous Crowdres Trail. The trails range from 0.2 miles on the Family Camping Trail to Crowdres Trail that runs 2.5 miles (one way). All trails feature a submersion into the natural surroundings. And once the peaks are reached, a surrounding view that reaches more than 20 miles. From Crowdres Mountain, the view includes the urban areas of Charlotte and Gastonia. From King's Pinnacle, the view is more rural, but urban encroachment can be seen.

Reaching the Overlook on Crowdres Mountain is a longer hike than to King's Pinnacle. And one hiker told me he once counted 300 steps to the Overlook top. At the visitor center, talk to the park rangers about your physical abilities and the amount of time you wish to spend hiking. Some parts of trails higher up may reach inclines of 40–50 percent, while other parts may be just a 10 percent incline.



The view from atop King's Pinnacle. Crowdres Mountain is ahead, and the park's visitor center to the right.

REACHING KING'S PINNACLE

On the sunny and brisk February morning I visited the park, the ranger recommended reaching King's Pinnacle. It's a strenuous but shorter route (about two hours roundtrip) than hiking to Crowdres Mountain and up to the Overlook. I first stopped at one of the picnic areas by the lake for a bag lunch. I then started on Fern Trail, a meandering easy walk on your way to the moderate Turnback Trail. Small animal and bird sounds echoed, and the sound of the leaves underfoot contrasted with the rushing sound of the wind through the trees. Turnback began flat, but soon the inclines began. By the time I reached Pinnacle Trail and took the left at the fork, the uphill climb had me stripping off my sweatshirt and jacket. From Turnback to the Pinnacle's top is about 0.7 miles, but all at a steep incline. Rocks and wooden steps help you navigate, and small trees on the trail are perfect to grasp when gravity pulls you to the side or backwards. But the climb is worth it. Atop the rocky Pinnacle, Charlotte can be seen through the smoggy distance and you see how far you've come when the visitor center's green roof is in view below.

But remember, you must hike down! 📍

Crowders Mountain State Park

522 Park Office Lane
Kings Mountain, NC 28086

(704) 853-5375

<http://ncparks.gov/visit/parks/crmo/main.php>

6 THE DALE TRAIL

Cabarrus, Rowan and Iredell counties

By Renee C. Gannon

Dale Earnhardt's death in February 2001 still haunts a generation of NASCAR fans. Earnhardt died doing what he loved: racing hard at the Daytona 500, where he mastered the slingshot move in his black No. 3 Chevrolet and earned his nickname "The Intimidator."

In 2005, the Cabarrus County Visitors Bureau opened the Dale Trail, a driving tour that offers a glimpse of the region that shaped this racing legend's life.

START YOUR ENGINES

The trail begins at the Cabarrus CVB on Dale Earnhardt Blvd. in Kannapolis, just off I-85 at Exit 60. The map details 19 points of interest; some are actual sites while others are general areas, usually profiling a place no longer with us. Count on 45 minutes if you just drive, or four hours if you stop along the route.

As you begin the tour in Kannapolis, what remains of the old Earnhardt Road can be seen on the left where it intersects with Dale Earnhardt Blvd. (also called NC Hwy. 3 in honor of Earnhardt). Here the Earnhardt family once owned a hog slaughterhouse and Dale raced a '56 Chevy. A few blocks later, Ralph Earnhardt's grave marker displays his No. 8 yellow race car on the headstone and a taped photo of his son, Dale.

The trail map mentions the former site of Eddleman's Garage (the engine shop where Ralph perfected moonshine-running cars) and the Flying Mile (the road that bore stripes of burned rubber), both off Hwy. 29. Dale Trail black flags hang from poles as you pass through Car Town, where Ralph and wife Martha raised their family among streets named

Ford, Plymouth and Hudson, and through Midway, once a center of town.

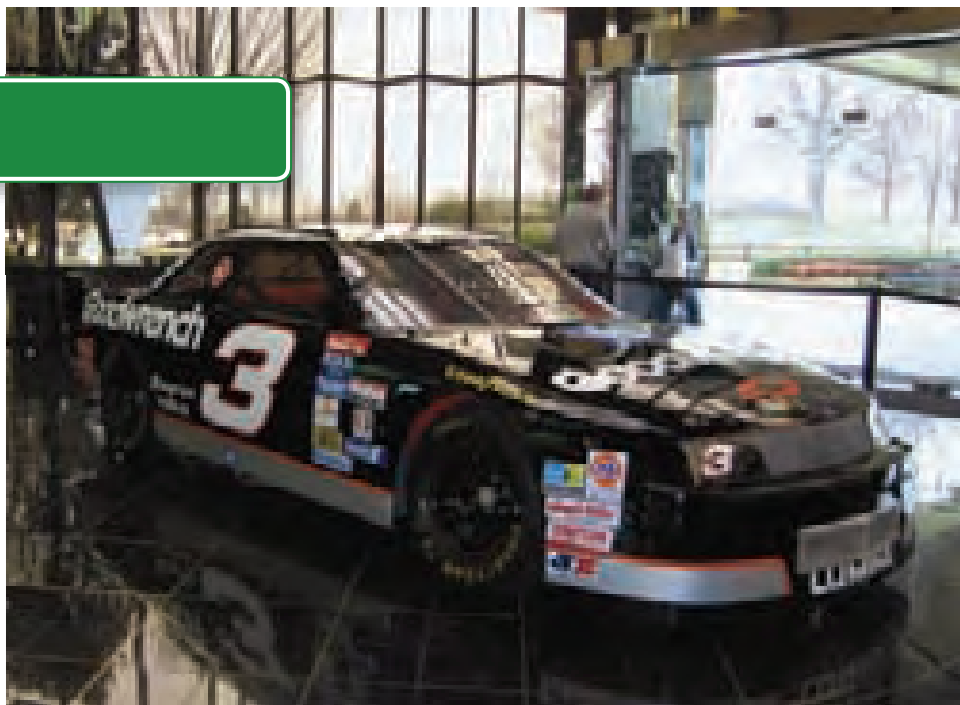
The trail visits Cannon Village, a good place to step out of the car and stretch your legs. As you turn from Vance St. onto West Ave., you enter what locals call "Idiot Circle." Starting in the 1960s,

Earnhardt and other teens would cruise the traffic circle. Park and visit the local shops, then walk a block east to the Dale Earnhardt Plaza. A 9-foot, 900-pound bronze statue of Earnhardt stands in the center of the plaza. Walk back across West Ave. to the Cannon Village Visitors Center to learn about the town's transition from textiles to research and biotechnology.

On the trail again, visit the Curb Motorsports racing exhibit that features Earnhardt's 1980 Winston Cup champion car (a No. 2 blue and yellow Olds), as well as the Richard Petty car that won his 199th race. Owner Mike Curb also owns Curb Records, and the shop displays posters, gold and platinum records of its recording artists. (The shop and racing exhibit recently moved to 600 Dale Earnhardt Blvd.)

Dale Earnhardt Inc. (DEI) in Mooresville is the next stop heading north. This glass and granite complex built by Earnhardt houses the DEI racing teams and showroom, as well as an Earnhardt exhibit and gift shop.

The trail returns to Kannapolis. As you head toward I-85 on Loop Rd., you pass Fieldcrest Cannon Stadium, home to the minor league baseball team The Intimidators. You can decide whether to head north on I-85 to visit Childress Racing in Welcome, N.C., or turn south and visit the Sam Bass Gallery and Lowe's Motor Speedway. 📍



The Dale Earnhardt exhibit at DEI in Mooresville.

Renee Gannon



Dale Earnhardt Plaza.

Renee Gannon

The Dale Trail

Cabarrus County CVB
3003 Dale Earnhardt Blvd.
Kannapolis, NC 28083

(800) 848-3740
www.thedaletrail.com
www.cabarruscvb.com

7 HORNE CREEK LIVING HISTORICAL FARM

Stokes County

By Renee C. Gannon



The 1870s farmhouse on Horne Creek farm is said to have 27 different paint colors, all added during a 90 percent accurate restoration derived from old photos as well as family memories and heirlooms.

Have you seen a sheep sheared? Tasted sweet apple cider squeezed out of a 1900s-era apple press? Smelled the pungent earthy odor from just-plowed field soil? Heard the high-pitched call of a guinea hen? Have your kids experienced these senses? At Horne Creek Living Historical Farm, you can experience all of these and more.

In 1984, as more developments than crops sprouted in local fields, the N.C. Department of Cultural Resources began searching for a farm to add to its list of historic sites. The department chose the Hauser farm in the Shoals community. In 1987, the Horne Creek site, named for the creek that runs through the property, opened to the public. The farm features livestock breeds and crop varieties that were prevalent at the turn of the 20th century.

The site is also home to the Southern Heritage Apple Orchard, the only known state-supported orchard in the country and the only one with an extensive collection of southern apple trees, soon reaching 400 varieties.

FARM HISTORY

The farm depicts life during 1900–1910, a transition year when fields were switching from vegetables and fruit to the more lucrative tobacco. The farm dates back to the 1830s, when John Hauser moved from nearby Bethania with his wife and seven children.

After the Civil War, one of his remaining sons, Thomas, took over the farm, and then passed it to one of his seven sons.

Family descendants donated memories and furniture to help restore to 90 percent accuracy the 1870s farmhouse built by Thomas Hauser. From the visitors center to the farmhouse, you walk beside a peach and apple orchard

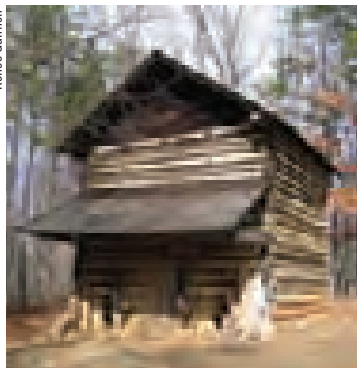
and a 1900s-era tobacco-curing barn. Around the two-story farmhouse and the attached well house sit a smoke house, dry house, chicken coops, fruit house, corn crib, large garden, double crib barn and a fenced area that holds cows and horses. Guinea hens and cats roam the property, and on my visit a hound dog greeted me on the home's front porch.

VISITING THE FARM TODAY

About 30,000 visitors come annually to the farm for a hands-on history and agricultural experience. School programs focus on food production to show students that food goes from the farm to the store. Visitors can shear sheep, cut grass with a scythe, draw water from the well, husk corn, make apple cider and weave a white oak basket. Volunteers also demonstrate how to make lye soap, apple butter, clothing, toys and crafts, log cabin construction and other farm activities crucial to survival in the early 1900s. You learn how the farm works, why certain livestock breeds and crop varieties were used and the manual labor involved in keeping the farm prosperous. Archeologists are also often on-site investigating early farm building locations.

Horne Creek holds special events throughout the year. More than 10,000 attend the annual cornshucking festival. Other events include Saturday afternoon “toe-tapping” music, old-fashioned cooking, how apples go from peeling to the pie, and how children lived and played on the farm.

Later this year work begins on a permanent visitors center for the farm, with attendance expected to climb close to 45,000. But the more than century-old pear tree that sits at the temporary center's corner will still be around to welcome those who want to wander around the farm and wonder about days past. 📍



In 1900–1910, farms were transferring from fruits and vegetables to tobacco, cured in barns such as this one.

Horne Creek Living Historical Farm

308 Horne Creek Farm Road
Pinnacle, NC 27043

(336) 325-2298

www.ah.dcr.state.nc.us/Sections/HS/horne/horne.htm

8 KÖRNER'S FOLLY

Forsyth County

By Renee C. Gannon

Anyone who has ever remodeled a home would be amazed at Körner's Folly. What started out in 1878 as a bachelor's pad/carriage house/artist studio for Jule Gilmer Körner, ended as a continuing work in progress: the structure served as his interior design business first, but also happened to be home for his wife and two children starting in 1886.

During his lifetime, Körner worked as a jack-of-all-trades: he managed construction projects, developed outdoor advertising by painting the Bull Durham tobacco signs throughout the South, and ran a successful artist studio. He eventually turned his interior decorating and design skills into a business.

At his death in 1924, the one-time carriage house and stables had evolved into a staggering menagerie with 22 rooms and 15 fireplaces, all on seven levels in a three-story building. After his passing, family found blueprints on Körner's desk for more renovations.

AN INTRICATE INTERIOR

The original carriage house design is still noticeable in the high arched ceiling from the front door to the back breakfast patio. Lining both walls are fireplaces made from tin, iron and wood, plus cabinets and tables, all of varied designs and sizes. The wood floor contains square doors that cover the air tunnels Körner built to circulate cool and warm air throughout the house. Windows above doors tilt and pivot to control the air distribution.

The self-guided tour begins in the front foyer. Information placards lead you through all 22 rooms, from front to back, up and down all seven levels via two sets of staircases. Approximately 90 percent of the furniture and artwork are original to the home. If you are on the tall side, beware that ceiling heights throughout the rooms range from just



This winding staircase in Korner's Folly goes from the ground floor to the attic's Cupid's Park theater. It seems you are climbing seven stories instead of three.

under six feet to as high as 25 feet. Doors also come in all sizes. Each room had its own design, and often, that design changed from wall to wall, corner to corner.

Room sizes vary, from the child-size playrooms located up a short set of steps from the master bedroom, to the full-length Reception room, which features a ceiling mural, tall windows and three chandeliers. The room also has small nooks, called "kissing corners," that offered privacy to couples in a time when public affection was frowned upon. Parties were held here often, with music provided by a single musician or an orchestra from Greensboro.

Beyond the Reception room, at the top of the winding staircase, lays Cupid's Park, a theater for children that runs 25 feet high, 32 feet long and 17 feet wide. The Körner family would hold plays and concerts on the theater's 16-by-18-foot stage, with an orchestra pit to the side, and seating for 75. Kerosene lamps and chandeliers provided lighting for this attic room.

A set of narrow, steep steps takes you downstairs to the dressing room where the family stored clothing and theater performers would change. This part of the house also has a sewing room and library and leads back to the front foyer, where the tour attendant stays. The attendant on the day I visited said she hears all sorts of comments from visitors coming down that too-small stairwell. The tour ends outside, with a visit to the four-seater brick outhouse, a smokehouse and a stop at Aunt Dealy's cottage, which now houses a gift shop.

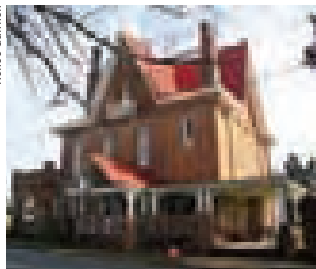
While under its first set of renovations, Körner's cousin, Nathaniel Körner, noted that this structure had become Jule's "folly." Instead of being insulted, Körner placed "Körner's Folly" in tile at the front entrance. 📍

Körner's Folly

413 South Main Street
Kernersville, NC 27284

(336) 996-7922

www.kornersfolly.org



Körner's Folly began as a carriage house and stables in 1878.

N.C. TRAVEL RESOURCES

MOUNTAINS

Alexander County

(828) 632-8141
www.alexandercountychamber.com

Alleghany County Chamber

(800) 372-5473
www.sparta-nc.com

Andrews Chamber

(828) 321-3584
www.andrewschambercommerce.com

Ashe County Chamber

(888) 343-2743
www.ashechamber.com

Asheville CVB

(828) 258-6101
www.exploreasheville.com

Avery/Banner Elk

(800) 972-2183
www.balconyoftheblueridge.com

Beech Mountain Chamber

(800) 468-5506
www.beechmntn.com

Black Mountain

(800) 669-2301
www.exploreblackmountain.com

Blowing Rock

(877) 750-INFO
www.blowingrock.com

Blue Ridge Parkway

(828) 298-0398
www.blueridgeparkway.org

Boone CVB

(800) 852-9506
www.visitboonenc.com

Brevard/Transylvania

County Tourism
(800) 648-4523
www.visitwaterfalls.com

Brevard-Transylvania Chamber

(828) 883-3700
www.brevardncchamber.org

Burke County Travel

& Tourism, Morganton
(888) 462-2921
www.burkecountytourism.org

Caldwell County

(828) 757-1290
http://caldwell.ces.ncsu.edu

Caldwell County Chamber

(828) 726-0616
www.caldwellcochamber.org

Cashiers Area

(828) 743-5191
www.cashiersnorthcarolina.com

Catawba County

(828) 465-8240
http://catawba.ces.ncsu.edu

Cherokee County

(828) 837-2242
www.cherokeecountychamber.com

Cherokee Indian Reservation

(800) 438-1601
www.cherokee-nc.com/main.htm

Clay County Chamber

(828) 389-3704
www.claycounty-nc-chamber.com

Cleveland County Chamber

(704) 484-4800/(704) 487-8521
(704) 739-4755 (Kings Mountain)
www.clevelandchamber.org

Dillsboro Merchants Assn

(828) 586-3461
www.dillsboromERCHANTS.com

Franklin Chamber/Macon County

(800) 336-7829/(828) 524-3161
www.franklin-chamber.com

Graham County Travel & Tourism

(800) 470-3790/(828) 479-3790
www.grahamcountytravel.com

Haywood County Chamber

(828) 456-3021/(877) 456-3073
www.haywood-nc.com

Haywood County/ Maggie Valley/Waynesville

Gateway to the Smokies
(800) 334-9036/(828) 452-0152
www.smokeymountains.net

Henderson County Travel & Tourism

(800) 828-4244
www.historichendersonville.org
www.historicflatrock.org

Greater Hendersonville Chamber

(828) 692-1413
www.hendersonvillechamber.org

Hickory Metro CVB & Regional Visitors Center

(800) 509-2444/(828) 322-1335
www.hickorymetro.com

Hickory Nut Gorge

(877) 625-2715/(828) 625-2725
www.hickorynut.org

High Country Host

Travel & accommodations
information
(800) 438-7500/(828) 264-1299
www.mountainsofnc.com

Highlands Chamber & Visitors Center

(828) 526-2114
www.highlandschamber.org

Jackson County Travel & Tourism

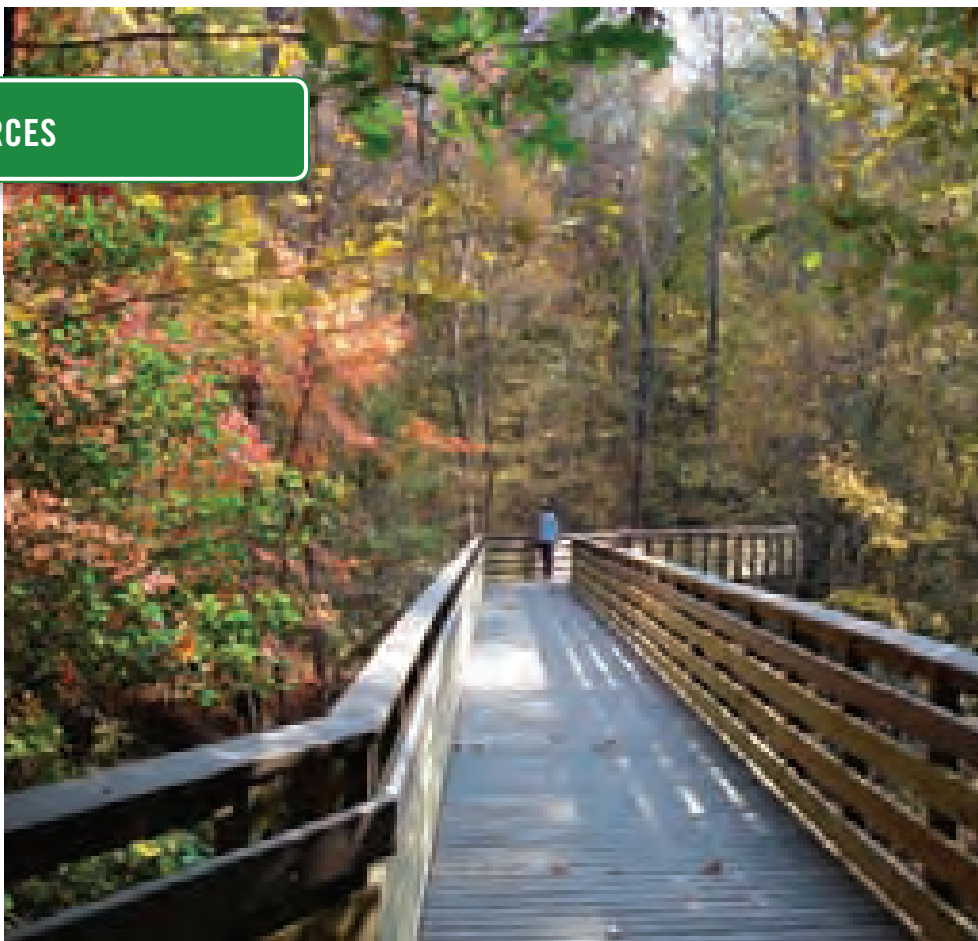
(800) 962-1911
www.mountainlovers.com

Lincolnton-Lincoln County

(704) 735-3096
www.lincolinchambernc.org

Madison County

(877) 262-3476
www.visitmadisoncounty.com



Maggie Valley Area CVB
(800) 624-4431/(828) 926-1686
www.maggiervalley.org

McDowell Chamber
(828) 652-4240
www.mcdowellchamber.com

McDowell Tourism Development Authority, Old Fort
(888) 233-6111/(828) 668-4282
www.mcdowellnc.org

Mitchell County Chamber, Spruce Pine
(828) 765-9483/(800) 227-3912
www.mitchell-county.com

Mooreville CVB
(704) 799-2400/(877) 661-1234
www.racecityusa.org
www.moorevillenc.org

NC Welcome Center
(I-40 West, Waynesville)
(828) 627-6206
www.visitnc.com

North Wilkesboro
(336) 667-7129
www.north-wilkesboro.com

Old Fort Chamber
(828) 668-7223
www.oldfort.org

Polk County Chamber
(828) 859-6236
www.polkchamber.org

Polk County Visitors Center, Tryon
(800) 440-7848
www.nc-mountains.org

Rutherford County Chamber
(828) 287-3090
www.rutherfordcoc.org

Rutherford County Tourism Development
(800) 849-5998/(828) 245-1492
www.rutherfordtourism.com

Statesville CVB
(877) 531-1819/(704) 878-3480
www.visitstatesville.org

Smoky Mountain Host
Guide to attractions & accommodations
(800) 432-4678
www.visitsmokies.org

Swain County
(800) 867-9246/(828) 488-3681
www.greatsmokies.com

Wilkes County Chamber
(336) 838-8662
www.wilkesnc.org

Wilkesboro
(336) 838-3951
www.wilkesboronorthcarolina.com

Yancey County-Burnsville Chamber
(800) 948-1632/(828) 682-7413
www.yanceychamber.com

WESTERN PIEDMONT

Anson County Chamber, Wadesboro
(704) 694-4181
www.ansoncounty.org

Archdale-Trinity Chamber
(336) 434-2073
www.archdaletrinitychamber.com

Belmont Chamber
(704) 825-5307

Bessemer City Area
(704) 629-5542
www.bessemercity.com

Cabarrus County CVB
(800) 848-3740/(704) 782-4340
www.visitcabarrusc.com

Central Park
(910) 428-9001
www.centralparknc.org
info@centralparknc.org

Charlotte Chamber
(704) 378-1300
www.charlottechamber.org

Charlotte CVB
(800) 722-1994/(704) 334-2282
www.visitcharlotte.com

Cherryville Chamber
(704) 435-3451
www.cherryvillechamber.com
www.cityofcherryville.com

Davidson County
www.visitdavidsoncounty.com

Davie County Chamber
(336) 751-3304
www.daviecounty.com

Denton Area Chamber
(336) 859-5922
www.dentonnorthcarolina.com

Eden
(336) 623-2110
www.ci.eden.nc.us

Elkin-Jonesville Chamber
(336) 526-1111
www.welcometonc.com

Gaston County Chamber
(800) 348-8461/(704) 864-2621
www.gastonchamber.com

Gaston County Travel & Tourism
(800) 849-9994/(704) 825-4044
www.gastontourism.com

Greensboro Area Chamber
(336) 387-8301
www.greensboro.org

Greensboro Area Convention & Visitors Bureau
(800) 344-2282/(336) 274-2282
www.visitgreensboro.com

High Point Chamber
(336) 882-5000
www.highpointchamber.org

High Point Convention & Visitors Bureau
(800) 720-5255/(336) 884-5255
www.highpoint.org

Kernersville Chamber
(336) 993-4521
www.kernersvillenc.com

King Chamber
(336) 983-9308
www.kingnc.com

Lexington Area Chamber & Visitors Center
(866) 604-2389/(336) 236-4218
www.visitlexingtonnc.com

Liberty Chamber
(845) 791-4200
www.liberty-nc.com

Marshville
(704) 624-3183
www.marshvillenc.com

Matthews Chamber
(704) 847-3649
www.matthewschamber.com

Mint Hill
(704) 545-9726
www.minthill.com

Monroe Tourism & Visitors Bureau
(704) 225-1085
www.visitmonroenc.org

Greater Mount Airy
(800) 948-0949/(336) 786-6116
www.visitmayberry.com

Piedmont Triad Visitors Center
(800) 388-9830/(336) 388-9830
www.greensboronc.org

Randolph County Tourism, Asheboro
(800) 626-2672
www.visitrandolphcounty.com

Reidsville Chamber
(336) 349-8481
www.reidsvillechamber.org

Rowan County Chamber
(704) 633-4221
www.rowanchamber.com

Rowan County CVB
(800) 332-2343/(704) 638-3100
www.visitsalisburync.com

Stanly County Chamber
(704) 982-8116
www.stanlychamber.org

Stanly County CVB
(800) 650-1476/(704) 986-2583
www.stanlycvb.com

Stokes County
(336) 593-2496
www.visitstokesnc.com

Thomasville Visitors Center
(800) 611-9907
www.thomasvilletourism.com

Union County Chamber
(704) 289-4567
www.unioncountycoc.com

Western Rockingham Chamber
(336) 548-6248
www.westernrockinghamchamber.com

Winston-Salem Visitor Center
(866) 728-4200/(336) 728-4200
www.visitwinstonsalem.com

Yadkin County Chamber
(336) 679-2200
www.yadkinchamber.org

EASTERN PIEDMONT

Angier
(919) 639-2500
www.angierchamber.org

Apex Chamber
(919) 362-6456/(800) 345-4504
www.apexchamber.com

Benson Chamber
(919) 894-3825
www.benson-chamber.com
www.bensonmuledays.com

Burlington/Alamance CVB
(800) 637-3804/(336) 570-1444
www.burlington-area-nc.org

Capital Area Visitor Center
(919) 733-4994
www.ncstatecapitol.org

Cary Chamber
(919) 467-1016/(800) 919-CARY
www.townofcary.org
www.carychamber.com

Caswell County Chamber
(336) 694-6106
www.caswellchamber.com

Chapel Hill/Orange County Visitors Bureau
(888) 968-2060
www.chocvb.org

Chapel Hill-Carrboro Chamber
(919) 967-7075
www.carolinachamber.org

Clayton Chamber
(919) 553-6352
www.claytonchamber.com

Dunn Area Tourism Authority
(910) 892-3282
www.dunntourism.org
www.visitDunn.com

Durham CVB
(800) 446-8604/(919) 687-0288
www.durham-nc.com

Greater Durham Chamber
(919) 682-2133
www.durhamchamber.org

Erwin Area
(910) 897-7300
www.erwinchamber.org

Fayetteville Area CVB
(800) 255-8217/(910) 483-5311
www.visitfayettevillenc.com

Franklin County
(919) 496-3056
www.franklin-chamber.org

Fuquay-Varina Area
(919) 552-4947
www.fuquay-varina.com

Garner Chamber
(919) 772-6440
www.garnerchamber.org

Garner
(919) 772-4688
www.ci.garner.nc.us

Granville County Chamber
(919) 693-6125/(919) 528-4994
www.granville-chamber.com

Hillsborough/Orange County
(919) 732-8156
www.hillsboroughchamber.com

Historic Hillsborough
(877) 732-7748/(919) 732-7741
www.historichillsborough.org

Holly Springs Town Hall
(919) 552-6221
www.hollyspringsnc.us

Hope Mills
(910) 423-4314
www.hopemillschamber.com

Johnston County Visitors Bureau
(800) 441-7829/(919) 989-8687
www.johnstoncountync.org

Knightdale Chamber
(919) 266-4603/(919) 217-2220
www.knightdalechamber.org
www.knightdalenc.gov

Laurinburg/Scotland County Area
(910) 276-7420
www.laurinburgchamber.org
www.visitscotlandnc.org

Lillington Area
(910) 893-3751
www.lillingtonnc.com
www.lillingtonchamber.org

Lumberton Visitors Bureau
(800) 359-6971/(910) 739-9999
www.lumberton-nc.com

Montgomery County
(910) 572-4300
www.montgomery-county.com

Morrisville Chamber
(919) 463-7150
www.morrisvillenc.com

Pembroke
(910) 521-9758
www.pembrokenc.com

Person County Tourism
(336) 597-2689
www.visitroxboronc.com

Pinehurst, Southern Pines & Aberdeen Area CVB
(800) 346-5362
www.homeofgolf.com

Pittsboro-Siler CVB
(800) 316-3829
www.visitcathamcounty.com

Raeford-Hoke Chamber
(910) 875-5929
www.hoke-raeford.com

Greater Raleigh Chamber
(919) 664-7000
www.raleighchamber.org

Greater Raleigh CVB
(800) 849-8499/(919) 834-5900
www.visitraleigh.com

Red Springs
(910) 843-5241
www.redsprings.org

Richmond County Chamber, Rockingham
(910) 895-9058
www.richmondcounty-chamber.com

Rolesville Town Hall
(919) 556-3506
www.ci.rolesville.nc.us

Roxboro Area Chamber
(336) 599-8333
www.roxboronc.com

Saint Pauls
(910) 865-5164
www.stpaulsnc.gov

Sandhills Area Chamber
(910) 692-3926
www.sandhillsonline.com

Sanford Area Chamber
(919) 775-7341
www.sanford-nc.com

Smithfield-Selma Area Chamber
(919) 934-9166
www.smithfieldselma.com

Greater Spring Lake Chamber
(910) 497-8821
www.springlakenc.org

Vance County Tourism Department, Henderson
(866) 438-4565/(252) 438-2222
www.kerrlake-nc.com

Wake Forest Area
(919) 556-1519
www.wakeforestchamber.org

Warren County EDC
(252) 257-2657
www.warren-chamber.org

Wendell
(919) 365-6318
www.wendellchamber.com

Zebulon
(919) 269-6320
www.zebulonchamber.org

SOUTHERN COAST

Bald Head Island Information Center
(800) 234-2441
www.baldheadisland.com

Beulaville
(910) 298-4647
www.townofbeulaville.com

Brunswick County, Shallotte
(800) 426-6644/(910) 754-6644
www.brunswickcounty-chamber.org

Brunswick Islands, Shallotte
(800) 795-7263
www.ncbrunswick.com

Cape Fear Coast CVB
(Wilmington, Carolina Beach, Kure Beach, Wrightsville Beach)
(877) 406-2356
www.gocapefearcoast.com

Columbus County Tourism
(910) 640-2818
www.discovercolumbuscounty.org

Coast Host
Information on attractions & accommodations
www.coasthost-nc.com
(800) 932-2144

Duplin County Tourism
(877) 862-6757
www.duplintourism.org

Elizabethtown-White Lake
(910) 862-4368
www.elizabethtownwhitelake.com
www.bladeninfo.org

Fair Bluff
www.fairbluff.com

Faison
(910) 267-2721

Greater Goldsboro Travel & Tourism
(919) 734-2241/(866) 440-2245
www.greatergoldsboro.com

Greater Hampstead Chamber
(910) 270-9642/(800) 833-2483
www.hampsteadchamber.com

Greater Jacksonville-Onslow
(800) 932-2144/(910) 347-3141
www.jacksonvilleonline.org
www.onslowcounty-tourism.com

Kenansville Area
(910) 296-2181
www.duplincountync.com

Kenly Chamber
(919) 284-5510
www.kenlynorthcarolina.com

Kinston CVB
(800) 869-0032
www.visitkinston.com

Kinston-Lenoir County Chamber
(252) 527-1131
www.kinstonchamber.com

LaGrange
(252) 527-1131
www.lagrangenorthcarolina.com

Mt. Olive Area Chamber
(919) 658-3113
www.moachamber.com
www.ncpicklefest.org

NC Ferries

(800) BY-FERRY
www.ncferry.org

Onslow County Tourism

(800) 932-2144/(910) 347-3141
www.onslowcountytourism.com

Pender County, Burgaw

(888) 576-4756/(910) 259-1536
www.visitpender.com

Pleasure Island (Carolina Beach, Kure Beach, Fort Fisher)

(800) 631-1460/(910) 341-4030
(800) 641-7082/(877) 406-2356
www.gocapefearcoast.com
www.carolinabeachgetaway.com
www.explorekurebeach.com

Southeastern Welcome Center

(I-95 South, Rowland)
(910) 754-2505

Southport Visitor Center, Southport

(910) 457-7927
www.cityofsouthport.com

Southport-Oak Island

(800) 457-6964/(910) 457-6964
www.southport-oakisland.com

Swansboro Chamber

(910) 326-1174
www.tourswansboro.com

Tabor City Chamber

(910) 653-2031
www.columbuschamber.net

Tabor City Visitor Center

(910) 653-9712
www.taborcitync.org

Greater Topsail Area

(800) 626-2780/(910) 329-4446
www.topsailcoc.com

Wallace

(910) 285-4044
www.wallacechamber.com

Warsaw

(910) 293-7804
www.warsawnorthcarolina.com
www.townofwarsawnc.com

Wayne County Chamber

(919) 734-2241
www.waynecountychamber.com

Greater Whiteville

(888) 533-7196/(910) 642-3171

Wrightsville Beach Visitors Center

(800) 650-9106/(910) 256-8116
www.visitwrightsville.com

NORTHERN COAST**Ahoskie Chamber**

(252) 332-2042
www.ahoskie-nc.org

Aycock Brown

Welcome Center, Kitty Hawk
(877) OBX-4FUN/(252) 261-4644
www.nagsheadguide.com/
attractions/kittyhawk
www.outerbanks.org

Belhaven Community Chamber

(252) 943-3770
www.belhavenchamber.com

Chowan County Tourism, Edenton

(800) 775-0111/(252) 482-3400
www.visitedenton.com

Coast Host

Information on attractions &
accommodation.
www.coasthost-nc.com

Corolla/Currituck Chamber

(252) 453-9497
www.currituckchamber.org

Crystal Coast Tourism Authority

(877) 206-0929/(252) 726-8148
www.crystalcoastnc.org

Dare County

(252) 475-5000
www.darenc.com

Dismal Swamp Canal Welcome Center, Camden County

(877) 771-8333/(252) 771-8333
www.DismalSwamp.com

Duck

(252) 255-1234
www.townofduck.com

Elizabeth City Area CVB

(866) 324-8948/(252) 335-5330
www.discoverec.org

Farmville Chamber

(252) 753-4670
www.farmville-nc.com

Gates County Manager

(252) 357-1240
www.albemarle-nc.com/gates

Greenville/Pitt County CVB

(800) 537-5564
www.visitgreenvillenc.com

Havelock

(252) 447-1101
www.havelockchamber.net

Halifax County Tourism

(800) 522-4282/(252) 535-1687
www.visithalifax.com

Historic Albemarle Tour

(800) 734-1117
www.historicalbemarletour.org

Historic Bath Visitor Center

(252) 923-3971
www.bath.nchistoricsites.org

Hyde County Chamber

(252) 926-9171/(888) 493-3826
www.hydecountychamber.org

Kill Devil Hills

(252) 449-5302
www.kdhnc.com

Kitty Hawk

(252) 261-3552
www.townofkittyhawk.org

Lake Gaston Chamber & Visitors Center

(252) 586-5711/(866) 730-5711
www.lakegastonchamber.com

Manteo

(252) 473-2133
www.townofmanteo.com

Martin County Chamber

(252) 792-4131
www.martincountync.com

Martin County Travel & Tourism

(800) 776-8566/(252) 792-6605
www.visitmartincounty.com

Murfreesboro Historical Association

(252) 398-5922
www.murfreesboronc.com

NC Ferries

(800) BY-FERRY
www.ncferry.org

NC Welcome Center

(I-95 North)
(252) 537-3365
www.visitnc.com

NC Welcome Center

(I-85 North).
(252) 456-3236
www.visitnc.com

Nash County Visitors Bureau

(800) 849-6825/(252) 972-5080
www.RockyMountTravel.com

Nags Head

(252) 441-5508
www.townofnagshead.net

New Bern/Craven County Convention & Visitor Center

(800) 437-5767/(252) 637-9400
www.visitnewbern.com

Ocracoke NPS Visitor Center

(252) 928-4531
www.nps.gov/caha
www.ocracokeisland.com

Outer Banks Chamber

(252) 441-8144
www.outerbankschamber.com

Outer Banks Welcome Center on Roanoke Island

(877) OBX-4FUN/(252) 473-2138
www.outerbanks.org

Pamlico County Chamber

(252) 745-3008
www.pamlicochamber.com
www.pamlicodirectory.com

Perquimans County Chamber

(252) 426-5657
www.perquimans.com

Roanoke Valley Chamber

(252) 537-3513
www.rvchamber.com

Rocky Mount

(252) 972-1542
www.rockymountnc.gov

Rocky Mount Chamber

(252) 446-0323
www.rockymountchamber.org

Scotland Neck

(252) 826-3152
www.townofscotlandneck.com

Southern Shores

(252) 261-2394
www.southernshores-nc.gov

Tarboro-Edgecombe Chamber

(252) 823-7241
www.tarborochamber.com

Greater Tyrrell County Chamber

(252) 796-1996
www.visittyrrellcounty.com

Washington County Tourism

(252) 793-3248
www.visitwashingtoncountync.com

Washington/Beaufort County Visitor Information

(800) 546-0162
www.originalwashington.com

Wilson Visitors Bureau

(800) 497-7398/(252) 243-8440
www.wilson-nc.com

Windsor/Bertie County Chamber

(252) 794-4277
www.albemarle-nc.com/windsor 