

Carolina country





20 CAROLINA COUNTRY ADVENTURES AHEAD



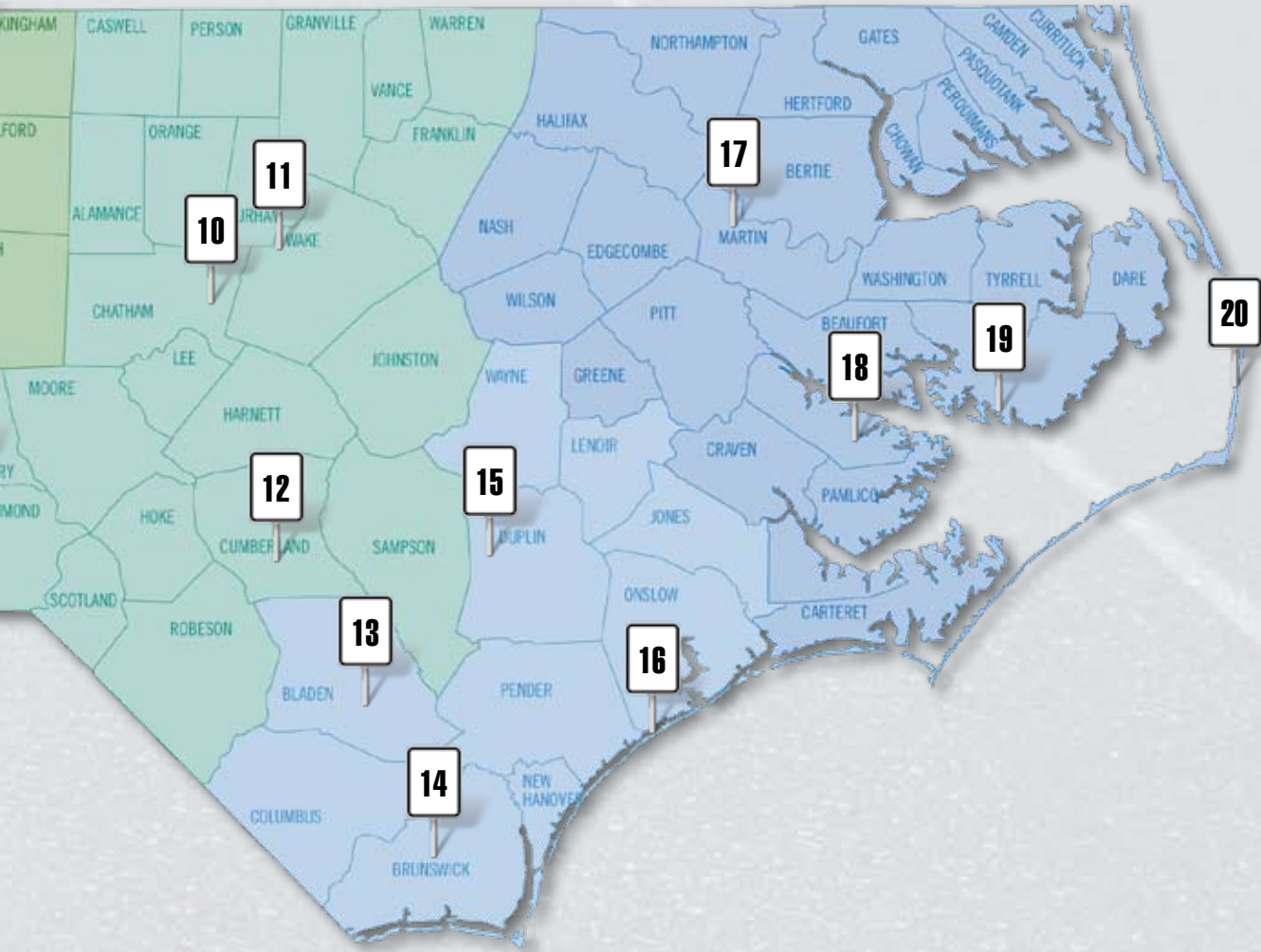
From one end to the other, North Carolina is about as diverse as any state in the nation. We've got hard gemstones in the west, soft crabs on the coast and red clay in the middle. The tobacco we grow in the mountains is different than what we grow in the east. What we live in, how we drive, what we eat and how we talk varies from one region to another.

Our annual Touchstone Energy Travel Guide encourages you to experience this variety firsthand.

This year we've collected the primary sources of general information about each of five regions (pages 72–75) and accompany them with a set of Carolina Country Adventures. Among the four adventures for each region are some well-known standbys and some not so familiar, some historical, some recreational, some just plain fun.

As you make your way through this guide, or through the countryside responsible for these adventures, you can be assured that a Touchstone Energy cooperative is nearby.

Thanks to everyone who helped us compile this guide, and to our sponsors: the cooperatives and the advertisers on pages 42 to 46.



TRAVEL ADVERTISING42

■ MOUNTAINS47

■ WESTERN PIEDMONT52

■ EASTERN PIEDMONT57

■ SOUTHERN COASTLAND62

■ NORTHERN COASTLAND67

TRAVEL RESOURCES72

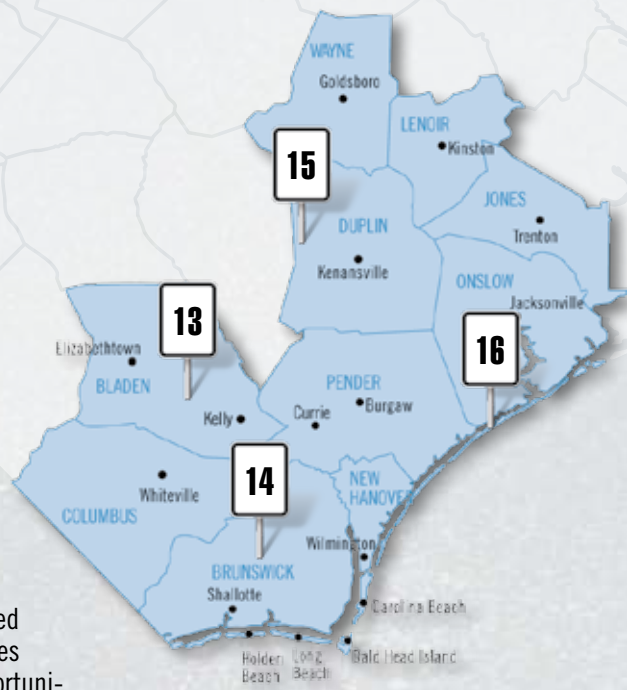
This supplement to Carolina Country is brought to you by North Carolina's Touchstone Energy cooperatives, serving nearly 2 million people in 93 North Carolina counties. We bring the power of human connections to all regions of North Carolina. Touchstone Energy cooperatives nationwide are committed to integrity, accountability, innovation and community involvement.


Writers
 Renee C. Gannon
 Michael E.C. Gery
 Karen Olson House
 Tara Verna

Designers
 Warren Kessler
 Tara Verna

Advertising
 Jennifer Boedart Hoey
 Todd Boersma
 Jenny Lloyd

SOUTHERN COASTLAND ADVENTURES



 Water is at the heart of the Southern Coastland. Rivers feed the farmlands and meander to the southern beaches. Lakes and streams provide fishing, hiking and other recreational opportunities. Towns grew up along the water's edge, from Wayne County south to the Brunswick Islands, from Seven Springs to the port city of Wilmington. This is also the land of pork, tobacco, seafood, grapevines and good times at the beach. (For more information see our travel resources on page 74.)

13

SINGLETARY LAKE STATE PARK



A nicely-maintained part of Bladen Lakes State Forest where groups can camp in cabins, learn about the Civilian Conservation Corps legacy and the unique regional environment, and tell stories under the stars.

14

GREEN SWAMP ECOLOGICAL PRESERVE



One of the last remaining examples of longleaf pine savannas anywhere.

15

WARSAW



A town deeply connected to and proud of the U.S. military and its veterans.

16

TOPSAIL ISLAND



A family-oriented island beach resort with a fondness for sea turtles.

13 SINGLETARY LAKE STATE PARK

Bladen County

By Michael E.C. Gery



Trees and other vegetation grow in from the margins of Carolina bays. At 4,000 feet across, Singletary Lake is one of the largest.

If you were heading to overnight camp for the first time and you ended up at Singletary Lake State Park, you'd come away with a whole new appreciation of both nature and North Carolina.

Singletary Lake is set up specifically for groups to use one of two camps. Camp Ipecac has cabins for up to 92 people from April through October, while Camp Loblolly Bay can handle 48 people year-round. If you're not reserved with a group, you may come year-round to fish, swim or hike on your own, but you need to check with the ranger's office ahead of time.

This is one of the famous Carolina bay lakes, whose origins thousands of years ago remain a mystery. They are not fed by streams or springs but rely on rain and runoff for their water. At one time some 500,000 of them existed in this region, but most have filled in with organic matter and are just moist swamps. Singletary is considered to be about 44 percent of its original size. They are called bays because of the trees that grow around them: sweet bay, red bay, loblolly bay. At 4,000 feet across, about 11 feet deep and with about four miles of shoreline, Singletary is one of the largest. (It was named for Richard Singletary who in 1729 received a large grant of land in this region.) Others here in southeastern North Carolina include Jones, Waccamaw and White.

A HISTORY OF CONSERVATION

In 1828, the North Carolina legislature declared all bay lakes in the state larger than 500 acres as public property, and in 1929 the size was reduced to 50 acres. At one time, the people who worked around here turned the conifer forests into

pitch, tar and turpentine, but when that industry shrank the lands seemed useless. In 1936 the National Park Service set up a demonstration project here to turn the area into a place for recreation, education and natural resource conversation. Under the direction of Franklin Roosevelt's Depression-era Resettlement Administration, the Civilian Conservation Corps hired legions of unemployed young men to carry out the plan. They built this into the educational camp it is today, and a new, bronze statue at Camp Ipecac honors their work. In 1939, the federal government leased the property to North Carolina, and the camp opened that summer. In 1954 it became state property.

Singletary lies within the vast, 36,000-acre Bladen Lakes State Forest and as such offers a wide opportunity to learn about what grows and lives here in the woods and the white sand soil. Bay lakes are especially acidic and do not contain much plant life, but around the shore you can see how peat develops and encourages the bay forest to grow. You can see pepperbush, huckleberry, sheepskill and gallberry. You can see the rare red-cockaded woodpecker, and the more common wood duck, pileated woodpecker and red-tailed hawk, plus wild turkey, deer, fence lizards and carpenter frogs.

The camp buildings invite a certain fellowship that urges visitors to swim together, paddle canoes, and tell stories in the dining hall, around a campfire and under the stars.

Singletary Lake State Park

6707 NC 53 Hwy.

Kelly, NC 28448

(910) 669-2928

www.ncsparks.net

14 GREEN SWAMP ECOLOGICAL PRESERVE

Brunswick County

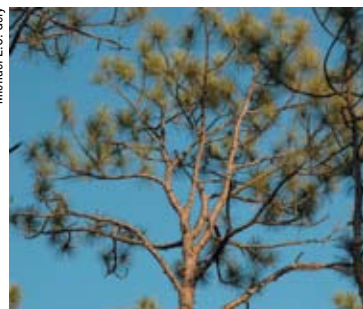
By Michael E.C. Gery

You can travel a long way through central Brunswick County on N.C. Hwy. 211 without seeing any buildings or utility poles. The place looks like it's in its natural, almost primeval state. But the truth is that if these quiet, beautiful savannas of longleaf pine trees and wiregrass, and the surrounding rich, dense bogs of Green Swamp were not managed, they would likely turn into your typical mixed hardwood forest within a generation.

Lucky for us, much of the rare ecology of Green Swamp has been saved. They say that only 1 percent of the nation's once-widespread longleaf pine savannas still remain, and that this one is the best.

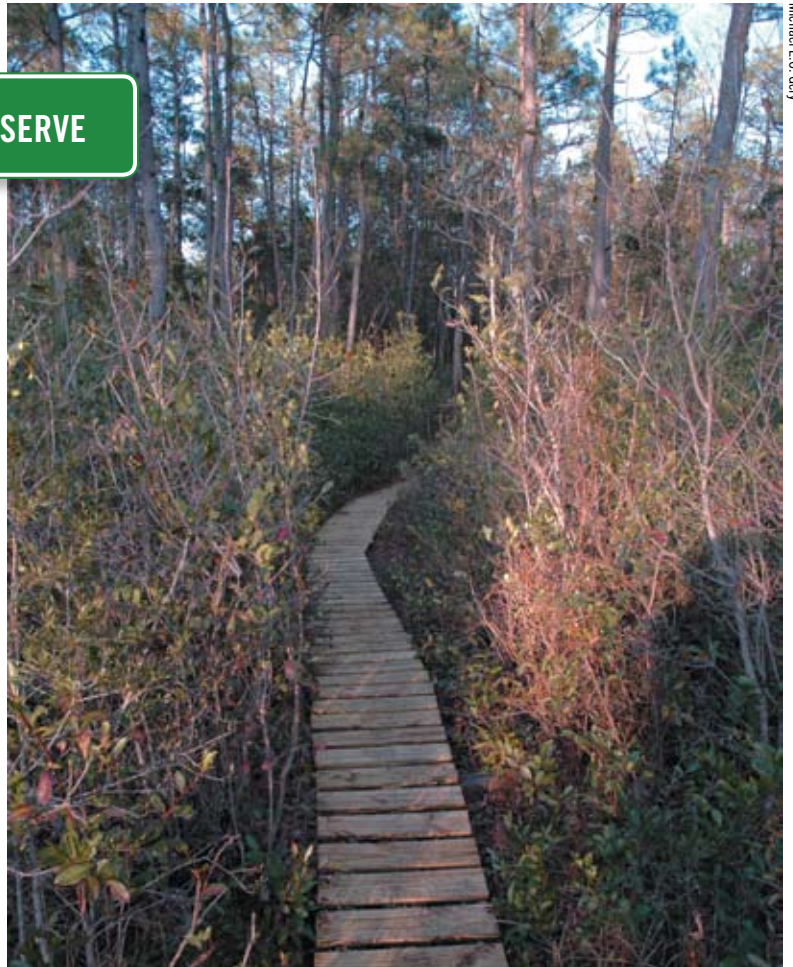
Most of the management here is done by private paper and pulp interests, such as International Paper. But since 1977, about 16,000 acres have been protected and managed by The Nature Conservancy. Drive 5 ½ miles north of Supply on Hwy. 211 and you'll enter the Green Swamp Ecological Preserve, and there's a small parking lot on the east side of the highway. If your shoes don't mind wet ground, you can walk into the Green Swamp here. First you

read information on a kiosk about the Green Swamp environment. Then you can wander on a soft trail through a wondrous savanna—or flat grassland—open to long views of the striking longleaf pine trees and swaying blond wiregrass below. Hike farther and a new, narrow plank walkway will take you



Beautiful longleaf pines surround you in here.

through the soggy pocosin (the Algonquin word for "swamp on a hill") and into another savanna. Keep going and you'll lose the sound of the occasional vehicle passing by on Hwy. 211. Then you can hear and see some amazing sights: birds, orchids and the spirit of the Green Swamp.



A new boardwalk path gets you through the pocosin area of Green Swamp Ecological Preserve.

If you were a certain kind of insect you'd be worried by this time. Green Swamp Preserve contains some 14 species of plants that devour insects, including Venus flytrap, sundew and the pitcher plant. Larger animals fare better in here, such as the fox squirrel, American alligator, Bachman's sparrow and something known as the hairstreak butterfly.

NATURE CONSERVANCY MANAGEMENT

The Nature Conservancy tells you that the controlled burns they do here help keep the place natural and healthy. Pond pines, for example, produce cones whose seeds proliferate best under high temperature. The longleaf pines require open ground and sunlight. The fires do not harm the roots of what grows here. Management of this preserve is made possible by the Estate of Harry Patrick Gold and Emma Green Gold.

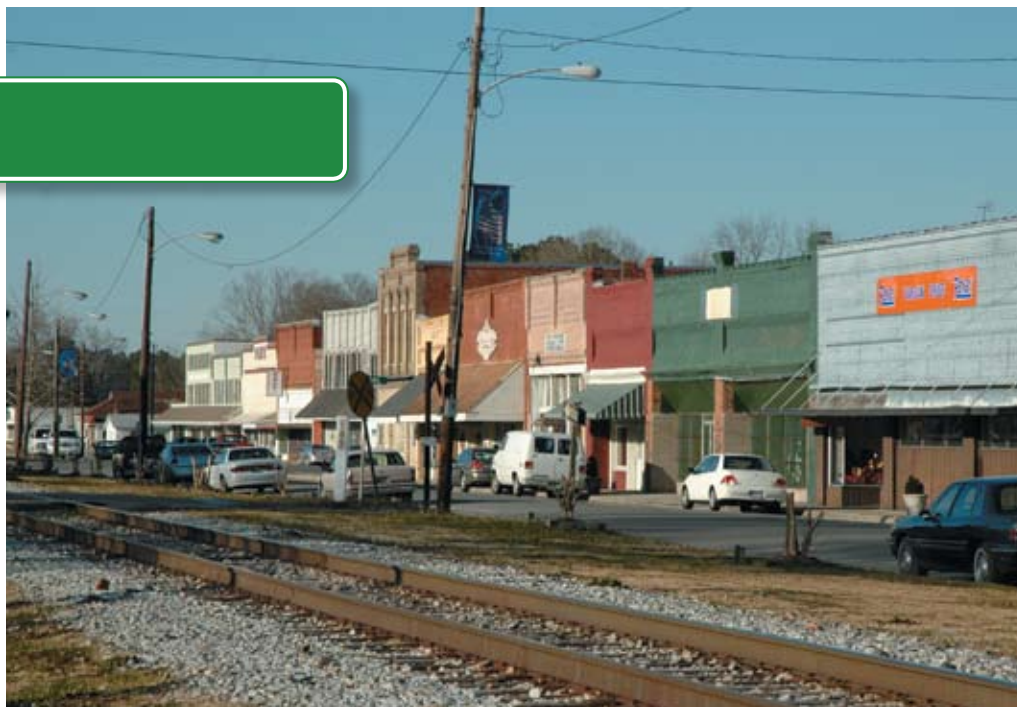
The entire Green Swamp comprises some 140 square miles. It's hard to believe such nature exists so near to the exploding growth of the Southport and Brunswick Islands region. In 1795, the state gave a huge land grant to three men for cutting the timber and mining peat. Haitian refugees settled back in here some years later. Parts of the area still seem inviting to refugees only.

The Nature Conservancy
Southeast Coastal Plain Office
131 Racine Drive, Suite 101
Wilmington, NC 28403
(910) 395-5000

15 WARSAW

Duplin County

By Michael E.C. Gery

*Well-preserved storefronts along Warsaw's railroad.*

Warsaw is a very proud town in western Duplin County that has long ties with the Seaboard Coast Line Railroad, the Baptist Church, the surrounding farms and especially the U.S. military. When other towns dropped it or ignored it all together, Warsaw celebrated the original Veterans Day on November 11 every year since it was first recognized in 1921 as the Armistice Day holiday to mark the end of World War I in 1918. It is the longest continuous Veterans Day celebration in the U.S.

There's a distinct honor for the military in Warsaw. Flags drape storefronts. A salon is named Headquarters of the Hair Command. Warsaw Veterans Park stands next to the Warsaw-Faison News office. The I-40 Rest Area sports a howitzer. The top military commander of forces in Afghanistan today, Gen. Dan K. McNeill, is from Warsaw.

But such reverence is most notable at the Veterans Memorial Museum. The museum is relatively new inside the carefully restored 1894 L.P. Best house (where daughter Margaret in 1917 married a Goldsboro man who became an Army general and President's Truman's Secretary of War). The first floor rooms appear as they did during the Bests'

residency, including several original furnishings. The second floor rooms smartly display artifacts of every U.S. war and conflict and also honor all Duplin County's veterans, including eight from the Dail family alone and all 18 who served in Vietnam. Museum director Randall Albertson—

himself retired from the U.S. Army after 40 years, including time in Operation Desert Storm—proudly tells the stories behind the artifacts and displays. Mannequins wear uniforms of all service branches, and six of the uniforms belonged to his kin, including his father. A special tribute hangs to Henry L. Stevens Jr., a Warsaw native who was 1931 National Commander of the American Legion and who was involved in starting the town's Veterans Day celebration.

DUPLIN DEPOT TO WARSAW

Known in the 1830s as Duplin Depot, then Mooresville, the town was incorporated in 1855 as Warsaw. The depot's stationmaster Thaddeus Love was nicknamed "Thaddeus of Warsaw," after a popular book of the time (about a Polish military hero, of course). Parts of today's business district and residential neighborhoods comprise the 27 buildings within the National Register Historic District.

With its population of 3,100, Warsaw also has a lively contemporary character. The Southern Breeze Sports Bar & Grill stands next to the Country Bar & Shag Club. There's the Breakthrough Creative music studio, the Duplin Trading Co., a community college branch, and The Hut sells "urban hip-hop clothing and mixed CDs." Right outside town is the world's largest pork producer Murphy-Brown and the famous Scottish-themed Country Squire Restaurant.

Greater Warsaw Chamber Of Commerce

P. O. Box 585
Warsaw, NC 28398

(910) 293-7804
www.townofwarsawnc.com

Veterans Memorial Museum

Thursdays & Fridays 1-4
Saturdays 2-4

(910) 293-2190

*The Veterans Memorial Museum in Warsaw's historic district.*

16 TOPSAIL ISLAND

Onslow and Pender counties

By Michael E.C. Gery



Topsail Island's beaches are among the area's most peaceful.

Topsail Island is a traditional, family-style beach resort. The only high-rise buildings are the boat storage facility in Surf City and the water tower behind Topsail Beach town hall. The speed limit is 25 in most residential areas so families can cross at a leisurely pace on their walk to the beach. There are four fishing piers on the island and golf courses nearby. And there are dozens of public beach access points.

This is a 26-mile-long, narrow barrier island, from 500 to 1,500 feet across, where you can see both the ocean and the sound (Intercoastal Waterway) from just about any point. Hurricane Fran slammed into Topsail in 1996 and devastated the island, but the communities rebuilt themselves. It was a major job for Jones-Onslow EMC, the Touchstone Energy cooperative that serves the island.

There are three municipalities: Topsail Beach (pop. 500) on the southern end, North Topsail Beach (pop. 850) on the northern end, and Surf City (pop. 1,400) in the middle straddling the Onslow-Pender county line. In summer, their populations swell maybe 20-fold. House and condo rentals range from \$400 per week in the off-season to \$4,000 per week in high season, with most costing in the middle of that range. Many places are simply used by their owners in summer.

PIRATES & MISSILES

They say the name Topsail (pronounced TOP'sul) comes from the mid-1700s when merchant ships and others would detect the lurking presence of pirate

ships by spying their topsails above the dune lines or in the distance.

Until after World War II, you couldn't drive over here. Locals came by boat. The U.S. Navy occupied the island for its secret Operation Bumblebee, which built oceanside launch pads for testing ramjet rockets and missiles. You can still see some of the Navy structures, including cubical concrete observation towers. The Assembly Building in Topsail Beach was the arsenal and now houses a collection of artifacts and stories of that era.

Surf City is where you go for groceries, supplies, a charter boat, massage therapy, church, pizza, Hula's Night Club, etc. From the mainland you reach Surf City on the historic swing bridge that opens from time to time to let boat traffic through.

A new bike and walking path runs along the 6-or-so-mile stretch of Hwy. 50 from Surf City through Topsail Beach. The ocean beach is flat, wide and inviting. As a defense against storm tides, they've had to push sand up to make dunes, and walking on them could cost you a \$500 fine. The famous Karen Beasley Sea Turtle Rescue and Rehabilitation Center is here, caring for loggerheads that are very favored neighbors. You also can roller skate here any night. The Sea Vista is a throwback to the days of oceanfront motels.

North Topsail is the newest town, incorporated in 1990, and it shows. The newer residential development seems to be going on here. There's a nice, new town park, and the beach access areas are well-equipped.

Greater Topsail Area Chamber of Commerce and Tourism

13775 Hwy. 50, Suite 101
Surf City, NC 28445

(800) 626-2780 (toll-free)
info@topsailcoc.com
www.topsailcoc.com



One of the observation towers on Topsail used when the Navy tested missiles in the 1940s.



**Henderson County
Travel & Tourism**
(800) 828-4244
www.historichendersonville.org

Greater Hendersonville Chamber
(828) 692-1413
www.hendersonvillechamber.org

**Hickory Metro CVB &
Regional Visitors Center**
(800) 509-2444/(828) 322-1335
www.hickorymetro.com

Hickory Nut Gorge
(828) 625-2725
www.hickorynut.org

High Country Host
Travel and accommodations
information
(800) 438-7500
www.mountainsofnc.com

**Highlands Chamber
& Visitors Center**
(828) 526-2114
www.highlandschamber.org

Jackson County Travel & Tourism
(800) 962-1911
www.mountainlovers.com

**Kings Mountain-Branch of
Cleveland County Chamber**
(704) 739-4755
www.clevelandchamber.org

Lincolnton-Lincoln County
(704) 735-3096
www.lincolinchambernc.org

Madison County
(877) 262-3476
www.visitmadisoncounty.com

Maggie Valley Area CVB
(800) 624-4431/(828) 926-1686
www.maggiervalley.org

McDowell Chamber
(828) 652-4240
www.mcdowellchamber.com

**McDowell Tourism
Development Authority, Old Fort**
(888) 233-6111/(828) 668-4282
www.mcdowellinc.org

**Mitchell County Chamber,
Spruce Pine**
(828) 765-9483/(800) 227-3912
www.mitchell-county.com

Mooresville CVB
(704) 799-2400/(877) 661-1234
www.racecityusa.org
www.moorevillenc.org

MOUNTAINS

Alexander County
(828) 632-8141
www.alexandercountychamber.com

Alleghany County Chamber
(800) 372-5473
www.sparta-nc.com

Andrews Chamber
(828) 321-3584
www.andrewschambercommerce.com

Ashe County Chamber
(888) 343-2743
www.ashechamber.com

Asheville CVB
(828) 258-6101
www.exploreasheville.com

Avery/Banner Elk
(800) 972-2183
www.balconyoftheblueridge.com

Beech Mountain Chamber
(800) 468-5506
www.beechmtn.com

Black Mountain
(800) 669-2301
www.exploreblackmountain.com

Blowing Rock
(877) 750-INFO
www.blowingrock.com

Blue Ridge Parkway
469-mile scenic highway
(828) 298-0398
www.blueridgeparkway.org

Boone CVB
(800) 852-9506
www.visitboonenc.com

**Brevard/Transylvania
County Tourism**
(800) 648-4523
www.visitwaterfalls.com

Brevard-Transylvania Chamber
(828) 883-3700
www.brevardncchamber.org

**Burke County Travel & Tourism,
Morganton**
(888) 462-2921
www.burkecountytourism.org

Caldwell County
(828) 757-1290
<http://caldwell.ces.ncsu.edu>

Canton Papertown Association
(828) 648-7925
[www.ncneighbors.com/
CantonPapertownAssociation](http://www.ncneighbors.com/CantonPapertownAssociation)

Cashiers Area
(828) 743-5191
www.cashiersnorthcarolina.com

Catawba County
(828) 465-8240
<http://catawba.ces.ncsu.edu>

Cherokee County
(828) 837-2242
www.cherokeecountychamber.com

Cherokee Indian Reservation
(800) 438-1601
www.cherokee-nc.com/main.htm

Clay County Chamber
(828) 389-3704
www.claycounty-nc-chamber.com

Cleveland County Chamber
(704) 484-4800/(704) 487-8521
www.clevelandcounty.com
www.clevelandchamber.org

Dillsboro Merchants Assn
(800) 962-1911
www.dillsboromERCHANTS.com

Franklin Chamber
(868) 372-5546
www.franklin-chamber.com

Glendale Springs (Ashe County)
(800) 342-2743
www.glendalesprings.com

Graham County Travel & Tourism
(828) 479-3790/(800) 470-3790
www.grahamcountytravel.com

Haywood County Chamber
(828) 456-3021/(877) 456-3073
www.haywood-nc.com

**Haywood County/
Maggie Valley/ Waynesville**
Gateway to the Smokies
(800) 334-9036/(828) 452-0152
www.smokeymountains.net

**Mountain Information Centers,
Asheville**
(828) 654-8822

Mountain Information Centers
(828) 258-4662

NC Welcome Center
(1-40 West, Waynesville)
(828) 627-6206
www.visitnc.com

North Wilkesboro
(336) 667-7129
www.north-wilkesboro.com

Old Fort Chamber
(828) 668-7223
www.oldfort.org

Polk County Chamber
(828) 859-6236
www.polkchamber.org

**Polk County Visitors Center,
Tryon**
(800) 440-7848
www.nc-mountains.org

Rutherford County Chamber
(828) 287-3090
www.rutherfordcoc.org

**Rutherford County
Tourism Development**
(800) 849-5998/(828) 245-1492
www.rutherfordtourism.com

Statesville CVB
(877) 531-1819/(704) 878-3480
www.visitstatesville.org

Smoky Mountain Host
Guide to attractions,
accommodations
(800) 432-4678
www.visitsmokies.org

Swain County
(828) 488-3681
www.greatsmokies.com

Wilkes County Chamber
(336) 838-8662
www.wilkesnc.org

Wilkesboro
(336) 838-3951
www.wilkesboronorthcarolina.com

**Yancey County-Burnsville
Chamber**
(828) 682-7413/(800) 948-1632
www.yanceychamber.com

WESTERN PIEDMONT

Anson County (Wadesboro)
(704) 694-4181
www.ansoncounty.org

Archdale-Trinity Chamber
(336) 434-2073
www.archdaletrinitychamber.com

Belmont
(704) 825-5307

Bessemer City Area
(704) 629-5542
www.bessemercity.com

Cabarrus County CVB
(800) 848-3740
www.cabarruscvb.com

Charlotte Chamber
(704) 378-1300
www.charlottechamber.org

Charlotte CVB
(800) 722-1994/(704) 334-2282
www.charlottecvb.org

Cherryville Chamber
(704) 435-3451
www.cherryville.com

Davidson County
www.davidsoncountync.com

Davie County Chamber
(336) 751-3304
www.daviecounty.com

Denton Area Chamber
(336) 859-4231
www.dentonnorthcarolina.com

Eden
(336) 623-2110
www.ci.eden.nc.us

Elkin-Jonesville Chamber
(336) 526-1111
www.welcometnc.com

Gaston County Chamber
(704) 864-2621
www.gastonchamber.com

Gaston County Travel & Tourism
(800) 849-9994/(704) 825-4044
www.gastontourism.com

Greensboro Area Chamber
(336) 387-8301
www.greensboro.org

**Greensboro Area Convention
and Visitors Bureau**
(800) 344-2282
www.visitgreensboro.com

High Point Chamber
(336) 882-5000 ext.221
www.highpointchamber.org

**High Point Convention
and Visitors Bureau**
(800) 720-5255/(336) 884-5255
www.highpoint.org

Kernersville Chamber
(336) 993-4521
www.kernersvillenc.com

King Chamber
(336) 983-9308
www.kingnc.com

**Lexington Area Chamber
and Visitors Center**
(866) 604-2389/(336) 236-4218
www.visitlexingtonnc.com

Liberty Chamber
(816) 781-5200
www.libertychamber.com
info@libertychamber.com

Marshville
(704) 624-3183

Matthews Chamber
(704) 847-3649
www.matthewschamber.com

Mint Hill
(704) 545-9726
www.minthill.com

**Monroe Tourism
& Visitors Bureau**
(704) 225-1085
www.visitmonroenc.org

Greater Mount Airy
(800) 948-0949
www.visitmayberry.com

Piedmont Triad Visitors Center
(800) 388-9830/(336) 388-9830
www.greensboronc.org

**Randolph County Tourism,
Asheboro**
(800) 626-2672
www.visitrandolphcounty.com

Reidsville
(336) 349-8481
http://reidsvillenc.accountsupport.com

Rowan County Chamber
(704) 633-4221
www.rowanchamber.com

Rowan County CVB
(800) 332-2343/(704) 638-3100
www.visitalisburync.com

Stanly County Chamber
(704) 982-8116

www.stanlychamber.org

Stanly County CVB
(800) 650-1476/(704) 986-2583
www.stanlycvb.com

Stokes County
(336) 593-2496
www.stokescounty.org

Thomasville Visitors Center
(800) 611-9907
www.thomasvilletourism.com

Union County Chamber
(704) 289-4567
www.unioncountycoc.com

Western Rockingham Chamber
(336) 548-6248
www.westernrockinghamchamber.com

Winston-Salem Visitor Center
(866) 728-4200/(336) 728-4200
www.visitwinstonsalem.com
infor@wscvb.com

Yadkin County Chamber
(336) 679-2200
www.yadkinchamber.org

Yadkin-Pee Dee Lakes Project
(910) 428-9001
http://centralparknc.org
info@centralparknc.org

EASTERN PIEDMONT

Angier
(919) 639-2500
www.angierchamber.org

Apex Chamber
(919) 362-6456/(800) 345-4504
www.apexchamber.com

Benson Chamber
(919) 894-3825
www.benson-chamber.com
www.bensonmuledays.com

Burlington/Alamance CVB
(800) 637-3804/(336) 570-1444
www.burlington-area-nc.org

Capital Area Visitor Center
(919) 733-4994
www.ncstatecapitol.org

Cary Chamber
(919) 467-1016/(800) 919-CARY
www.townofcary.org
www.carychamber.com

Caswell County Chamber
(336) 694-6106
www.caswellcountync.gov/
chamber.htm

Chapel Hill/Orange County
(888) 968-2060
www.chocvb.org

Chapel Hill-Carrboro Chamber
(919) 967-7075
www.carolinachamber.org

Clayton Chamber
(919) 553-6352
www.claytonchamber.com

Dunn Area Tourism Authority
(910) 892-3282
www.dunntourism.org
www.visitDunn.com

Durham CVB
(919) 687-0288/(800) 446-8604
www.durham-nc.com

Greater Durham Chamber
(919) 682-2133
www.durhamchamber.org

Erwin Area
(910) 897-7300
www.erwinchamber.org

Fayetteville Area CVB
(800) 255-8217/(910) 483-5311
www.visitfayettevillenc.com

Franklin County
(828) 524-3161/(866) 372-5546
www.franklin-chamber.org

Fuquay-Varina Area
(919) 552-4947
www.fuquay-varina.com

Garner Chamber
(919) 772-6440
www.garnerchamber.org

Garner
(919) 772-4688
www.ci.garner.nc.us

Granville County Chamber
(919) 693-6125/(919) 528-4994
www.granville-chamber.com

Hillsborough/Orange County
(919) 732-8156
www.hillsboroughchamber.com

Historic Hillsborough
(919) 732-7741
www.historichillsborough.org

Holly Springs Town Hall
(919) 552-6221
www.hollyspringsnc.us

Hope Mills
(910) 423-4314
www.hopemillschamber.com

Johnston County Visitors Bureau
(800) 441-7829/(919) 989-8687
www.johnstoncountync.org

Knightdale Chamber
(919) 266-4603/(919) 217-2220
www.knightdalechamber.org
www.ci.knightdale.nc.us

Laurinburg/Scotland County Area
(910) 276-7420
www.laurinburgchamber.org
www.visitscotlandnc.org

Lillington Area
(910) 893-3751
www.lillingtonnc.com

Lumberton Visitors Bureau
(800) 359-6971/(910) 739-9999
www.lumberton-nc.com

Montgomery County
(910) 572-4300
www.montgomery-county.com

Morrisville
(919) 463-7150
www.morrisvillenc.com

Pembroke
(910) 521-9758
www.pembrokenc.com

Person County Tourism
(336) 597-2689
www.visitroxboronc.com

**Pinehurst, Southern Pines
and Aberdeen Area CVB**
(800) 346-5362
www.homeofgolf.com

Pittsboro-Siler CVB
(800) 316-3829
www.visitcathemcounty.com

Raeford-Hoke
(910) 875-5929
www.hoke-raeford.com

Greater Raleigh Chamber
(919) 664-7000
www.raleighchamber.org

Greater Raleigh CVB
(800) 849-8499/(919) 834-5900
www.visitraleigh.com

Red Springs
(910) 843-5241
www.redsprings.org

**Richmond County Chamber,
Rockingham**
(910) 895-9058
www.richmondcounty-chamber.com

Rolesville Town Hall
(919) 556-3506
www.ci.rolesville.nc.us

Roxboro Area Chamber
(336) 599-8333
www.roxboronc.com

Saint Pauls
(910) 865-5164
www.stpaulsnc.gov

Sandhills Area Chamber
(910) 692-3926
www.sandhillsonline.com

Sanford Area Chamber
(919) 775-7341
www.sanford-nc.com

Smithfield-Selma Area Chamber
(919) 934-9166
www.smithfieldselma.com

Greater Spring Lake Chamber
(910) 497-8821
www.springlakenc.org

**Vance County Tourism
Department (Henderson)**
(866) 438-4565/(252) 438-2222
www.kerrlake-nc.com

Wake Forest Area
(919) 556-1519
www.wakeforestchamber.org

Warren County EDC
(252) 257-2657
www.warren-chamber.org

Wendell
(919) 365-6318
www.wendellchamber.com

Yadkin-Pee Dee Lakes Project
(704) 422-3215
www.lakesproject.org

Zebulon
(919) 269-6320
www.zebulonchamber.org

SOUTHERN COAST

**Bald Head Island
Information Center**
(800) 234-2441
www.baldheadisland.com

Beulaville
(910) 298-4647
www.townofbeulaville.com

Brunswick County, Shallotte
(800) 426-6644/(910) 754-6644
www.brunswickcounty-chamber.org

Brunswick Islands, Shallotte
(800) 795-7263
www.ncbrunswick.com

Cape Fear Coast CVB
(Wilmington, Carolina Beach,
Kure Beach, Wrightsville Beach)
(877) 406-2356
www.gocapefearcoast.com

Columbus County Tourism
(910) 649-5998
www.whitevillenc.com

Coast Host
Information on attractions and
accommodations
www.coasthost-nc.com

Duplin County Marketing
(800) 755-1755/(910) 296-2181
www.duplintourism.org

Elizabethtown-White Lake
(910) 862-4368
www.elizabethtownwhitelake.com
www.bladeninfo.org

Fair Bluff
(910) 649-5998
www.fairbluff.com

Faison
(910) 267-2721

**Greater Goldsboro
Travel & Tourism**
(919) 734-2245/(866) 440-2245
www.greatergoldsboro.com

Greater Hampstead Chamber
(910) 270-9642/(800) 833-2483
www.hampsteadchamber.com

Greater Jacksonville-Onslow
(910) 347-3141
www.jacksonvilleonline.org
www.onslowcountytourism.com

Kenansville Area
(910) 296-2180

Kenly Chamber
(919) 284-5510
www.kenlynorthcarolina.com

Kinston CVB
(800) 869-0032
www.visitkinston.com

Kinston-Lenoir County Chamber
(252) 527-1131
www.commercekinstonnc.com
www.kinstonchamber.com

LaGrange
(252) 527-1131
www.lagrangenorthcarolina.com

Mt. Olive Area Chamber

(919) 658-3113
www.moachamber.com
www.ncpicklefest.org

Nash County Visitors Bureau

(800) 849-6825
www.RockyMountTravel.com

NC Ferries

(800) BY-FERRY
www.ncferry.org

Onslow County Tourism

(800) 932-2144
www.onslowcountytourism.com

Pender County

(Burgaw)
(910) 259-1536/(800) 576-4756
www.visitpender.com

Pleasure Island (Carolina Beach, Kure Beach, Fort Fisher)

(800) 631-1460/(910) 341-4030
(800) 641-7082/(877) 406-2356
www.gocapefearcoast.com
www.carolinabeachgetaway.com
www.explorekurebeach.com

Southeastern Welcome Center

(I-95 South, Rowland)
(910) 754-2505

Southport Visitor Center, Southport

(910) 457-7927
www.cityofsouthport.com

Southport-Oak Island

(800) 457-6964/(910) 457-6964
www.southport-oakisland.com

Tabor City

(910) 653-2031

Greater Topsail Area

(800) 626-2780/(910) 329-4446
www.topsailcoc.com

Wallace

(910) 285-4044
www.wallacechamber.com

Warsaw

(910) 293-7814
www.warsawnorthcarolina.com
www.townorwarsawnc.com

Wayne County Chamber

(919) 734-2241
www.waynecountychamber.com

Greater Whiteville

(910) 642-3171/(888) 533-7196

Wilson Visitors Bureau

(252) 243-8440/(800) 497-7398
www.wilson-nc.com

Wrightsville Beach

Visitors Center
(800) 650-9106/(910) 256-8116
www.visitwrightsville.com

NORTHERN COAST**Ahoskie Chamber**

(252) 332-2042
www.ahoskie-nc.org

Aycock Brown Welcome Center, Kitty Hawk

(877) OBX-4FUN/(252) 473-2138

www.outerbanks.org

Belhaven Community Chamber
(252) 943-3770
www.belhavenchamber.com

Chowan County Tourism, Edenton

(800) 775-0111/(252) 482-3400
www.visitedenton.com

Coast Host

Information on attractions and accommodation.
www.coasthost-nc.com

Corolla/Currituck Chamber

(252) 453-9497
www.currituckchamber.org

Crystal Coast Tourism Authority

(877) 206-0929/(252) 726-8148
www.crystalcoastnc.org

Dare County

(252) 475-5000
www.darenc.com

Dismal Swamp Canal Welcome Center, Camden County

(252) 771-8333/(877) 771-8333
www.DismalSwamp.com

Duck

(252) 255-1234
www.townofduck.com

Elizabeth City Area CVB

(252) 335-5330/(866) 324-8948
www.discoverec.org

Farmville Chamber

(252) 753-4670
www.farmville-nc.com

Gates County Manager

(252) 357-1240
www.albemarle-nc.com/gates/
G-O-E/county.htm

Greenville/Pitt County CVB

(800) 537-5564
www.visitgreenvillenc.com

Havelock

(252) 447-1101
www.havelockchamber.net

Halifax County Tourism

(800) 522-4282
www.visithalifax.com

Historic Albemarle Tour

(800) 734-1117
www.historicnenc.com

Historic Bath Visitor Center

(252) 923-3971
www.bath.nchistoricsites.org

Hyde County Chamber

(252) 926-9171/(888) 493-3826
www.hydecountry.org

Kill Devil Hills

(252) 449-5302
www.kdhnc.com

Kitty Hawk

(252) 261-3552
www.townofkittyhawk.org

Lake Gaston Chamber and Visitors Center

(252) 586-5711/(866) 730-5711
www.lakegastonchamber.com

Manteo

(252) 473-2133
www.townofmanteo.com

Martin County Chamber

(252) 792-4131
www.martincountync.com

Martin County Travel & Tourism

(800) 776-8566
www.visitmartincounty.com

Murfreesboro Historical Association

(252) 398-5922
www.murfreesboronc.com

NC Ferries

(800) BY-FERRY
www.ncferry.org

NC Welcome Center

(I-95 North).
(252) 537-9836
www.visitnc.com

NC Welcome Center

(I-85 North).
(252) 456-3236
www.visitnc.com

Nags Head

(252) 441-5508
www.townofnagshead.net

New Bern/Craven County Convention and Visitor Center

(800) 437-5767
www.visitnewbern.com

Ocracoke NPS Visitor Center

(252) 928-4531
www.nps.gov/caha

Outer Banks Chamber

(252) 441-8144
www.outerbankschamber.com

Outer Banks Welcome Center on Roanoke Island

(252) 473-2138/(877) OBX-4FUN
www.outerbanks.org

Pamlico County Visitor Center

(252) 745-3008
www.pamlicochamber.com
www.pamlicodirectory.com

Perquimans County Visitors Center

(252) 426-5657
www.perquimans.com

Roanoke Valley Chamber

(252) 537-3513
www.rvchamber.com

Rocky Mount

(252) 972-1542
www.ci.rocky-mount.nc.us

Scotland Neck

(252) 826-3152
www.townofscotlandneck.com

Southern Shores

(252) 261-2394
www.southernshores-nc.gov

Swansboro

(910) 326-1174
www.tourswansboro.com

Tarboro-Edgecombe Chamber

(252) 641-4200
www.tarboro-nc.com

Greater Tyrrell County Chamber

(252) 796-1996
www.visittyrellcounty.com

Washington County Tourism

(252) 793-3248
www.visitwashingtoncountync.com

Washington/Beaufort County Visitor Information

(800) 546-0162
www.originalwashington.com

Windsor/Bertie County Chamber

(252) 794-4277
www.windsor-bertie.com